



PUNJAB HEALTH STATISTICS 2023



BUREAU OF STATISTICS
Planning & Development Board
Government of the Punjab

Punjab Health Statistics 2023



Bureau of Statistics
Planning & Development Board
Government of the Punjab

Contents

Sr. No.	T i t l e	P a g e No.
1	Preface	v
2	Editorial Board	vi
3	List of Tables	vii
4	List of Figures	viii
5	Symbols and Abbreviations	ix
6	Explanatory Note	x
7	Important Definitions	xi-xii
8	Statistical Abstract	xiii
9	Addresses, Telephone Numbers & Email ID's of Bureau of Statistics (Headquater & Field Offices)	54-55

Preface

Sustained development of any society is highly interlinked with the human development and public health; plays significant role in achieving the goal of building better society. Government and the relevant departments allocate large investments in order to provide adequate health services to the public and there is need for evaluation of the efficacy of various interventions. To support in evidence-based decision making in health sector, Bureau of Statistics, Planning & Development Board, Government of the Punjab has been publishing "Punjab Health Statistics" since 2020 and this is the 3rd edition of this valuable publication. The statistics provided in this report are a pre-requisite for sound decision-making at Tehsil, District, and Divisional levels of concerned departments/sectors.



This report contains valuable statistics regarding number of public & private Health Institutions; Hospitals, Dispensaries, T.B Clinics, Rural Health Centres (R.H.Cs.), Basic Health Units (B.H.U.s.), Sub Health Centres (S.H.Cs.), Maternity & Child Health Centres (M.H.Cs.), and Trauma Centres, along with their bed strength, in-door & outdoor patients treated in these Health Institutions, Registered Medical & ParaMedical Personnel at the Tehsil, District, and Divisional levels.

This publication is composed on the basis of data received from Directorate General Health Services, Punjab, Chief Executive Officers (C.E.O's) Health, Inspector General (I.G.) Prison, Auqaf Department, Punjab Employees Social Security Institution, Pakistan Medical Services WAPDA, Pakistan Nursing Council and Pakistan Medical Commission (P.M.C.). We highly acknowledge their cooperation, as without that it would not be possible to produce this publication.

This report has been completed due to dedicated efforts of the staff of the Health Division of the Bureau of Statistics Punjab. The whole team worked with dedication, devotion and professionalism to complete the report. I would like to congratulate all the staff involved, for their committed efforts in the preparation of this report.

All possible efforts are carried out to incorporate the latest available data in this report. It is expected that this report will be useful source of information for the policymakers, planners, academia, researchers, and other data users in the public and private sectors.

Suggestions for further improvements are highly appreciated for next edition.



(CH. SAJID RASUL)
DIRECTOR GENERAL

Editorial Board

Ch. Sajid Rasul

Director General

Mr. Shamas ul Huda

Director

Ms. Rukhsana Naik

Deputy Director

Mr. Qaisar Rashid

Assistant Director

Mr. Ejaz Akbar

Statistical Officer

Data Composition

Syed Bilal Hussain Taj

Statistical Assistant

Madiha Tahir

Senior Clerk

Data Collection

Mr. Abdual Sattar

Statistical Officer

Syed Bilal Hussain Taj

Statistical Assistant

Supporting Staff

Amjad Maqbool

Naib Qasid

Muhammad Zeeshan

Naib Qasid

List of Tables

Table No.	T i t l e	P a g e No.
1	Health Institutions and Bed Strength, The Punjab, As on 01-01-2023	1
2	Health Institutions and Their Bed Strength by Administrative Control, The Punjab: As on 01-01-2023	3
3	Health Institutions by Division, District, Tehsil, The Punjab: As on 01-01-2023	4-8
4	Hospitals by Division, District, Tehsil, The Punjab: As on 01-01-2023	13
5	Registered Medical Personnel by Gender, As on 01-01-2023	15
6	Registered Nurses LHV's Midwives & Naib/Dais, The Punjab: As on 01-01-2023	17
7	Health Facilities per Million Population, The Punjab: As on 01-01-2023	18
8	Patients Treated by Various Health Institution, The Punjab: As on 01-01-2023	19
9	Dispensaries by Division, District, Tehsil and Population, The Punjab: As on 01-01-2023	21-25
10	R.H.C & Their Beds Strength by Division, District, Tehsil and Population, The Punjab: As on 01-01-2023	27-31
11	B.H.U & Their Beds Strength by Division, District, Tehsil and Population, The Punjab: As on 01-01-2023	34-38
12	Health Facility & Their Beds Strength by Division, District and Tehsil, The Punjab: As on 01-01-2023	40
13	Patients Treated (Indoor & Outdoor) in Government Hospitals by Division, District, and Tehsil, The Punjab: As on 01-01-2023	42-46
14	Patients Treated in Government Hospitals by Division, District and Tehsil, The Punjab: As on 01-01-2023	48-52

List of Figures

Figure No.	Title	Page No.
1	Health Institutions, The Punjab: 2019-2023	2
2	Hospitals by Administrative Control, The Punjab: As on 01-01-2023	3
3	Total Number of Hospitals by District, The Punjab: As on 01-01-2023	9
4	Total Number of Dispensaries by District, The Punjab: As on 01-01-2023	10
5	Total Number of R.H.Cs by District, The Punjab: As on 01-01-2023	11
6	Total Number of B.H.U.s by District, The Punjab: As on 01-01-2023	12
7	Total Number of Hospitals by Division, The Punjab: As on 01-01-2023	14
8	Registered Medical Personnel in Punjab: As on 01-01-2023	16
9	Registered Nurses, Midwives, and LHV's, The Punjab: As on 01-01-2023	17
10	Patients Treated by Various Health Institutions, The Punjab: As on 01-01-2023	19
11	Population Per Hospital by Division, The Punjab: As on 01-01-2023	20
12	Population Per Bed of the Hospitals by Division, The Punjab: As on 01-01-2023	20
13	Population Per Dispensary by Division, The Punjab: As on 01-01-2023	26
14	Population Per R.H.C by Division, The Punjab: As on 01-01-2023	32
15	Population Per Bed of R.H.C by Division, The Punjab: As on 01-01-2023	33
16	Population Per B.H.U by Division, The Punjab: As on 01-01-2023	39
17	Population Per Bed of B.H.U by Division, The Punjab: As on 01-01-2023	39
18	Population Per Total Health Facilities by Division, The Punjab: As on 01-01-2023	41
19	Population Per Bed of Total Facilities by Division, The Punjab: As on 01-01-2023	41
20	Indoor & Outdoor Patients Treated in Government Hospitals by Division, The Punjab: As on 01-01-2023	47
21	Indoor & Outdoor Patients Treated in Government Hospitals, The Punjab: (2019 - 2023)	53

Symbols and Abbreviations

-	=	Nil or Insignificant
A.J.K	=	Azad Jammu and Kashmir
B.H.U	=	Basic Health Unit
BDS	=	Bachelor of Dental Surgery
BoS	=	Bureau of Statistics
CEO	=	Chief Executive Officer
CONCLD.	=	Concluded
CONTD.	=	Continued
D.G.Khan	=	Dera Ghazi Khan
DHQ	=	District Headquarter
GoP	=	Government of the Punjab
I.G	=	Inspector General
K.P.K	=	Khyber Pakhtunkhwa
LHV	=	Lady Health Visitor
MBBS	=	Bachelor of Medicine and Bachelor of Surgery
M.B.D	=	Mandi Bahauddin
MCH	=	Maternal & Child Health Centers
N.A	=	Not Applicable
NR	=	Not Reported
PBS	=	Pakistan Bureau of Statistics
PMDC	=	Pakistan Medical & Dental Council
PNC	=	Pakistan Nursing Council
PR	=	Pakistan Railways
R.Y.Khan	=	Rahim Yar Khan
R.H.C	=	Rural Health Center
S.H.C	=	Sub Health Center
T.T.Singh	=	Toba Tak Singh
TB	=	Tuberculosis
THQ	=	Tehsil Headquarter
WAPDA	=	Water and Power Development Authority

EXPLANATORY NOTE

Annual Data in respect of the following items is presented in this Report:-

- 1) Number of Health Institutions
- 2) Number of beds in Health Institutions
- 3) Number of Indoor & Outdoor Patients Treated in Health Institutions
- 4) Medical & Para Medical Personnel

All information is provided at Tehsils/ Districts and Divisional Levels.

Coverage

“**Punjab Health Statistics 2021**” covers information regarding Hospitals, Dispensaries, T.B. Clinics, Rural Health Centers (RHCs), Basic Health Units (BHUs), Sub-Health Centers (SHC) and Maternity & Child Health Centers (MCH) located in Punjab under administration of Health Department, Home Department, Auqaf Department, Pakistan Railways, WAPDA, Punjab Employees' Social Security Institution (PESSI), and Private Trust Institutions located in Punjab province.

Note: - Health Institutions belonging to the Federal government, and Defense Services and Private Doctors are not being covered.

Data Collection System

i) Health Department

Health Institutions belonging to the Health Department in the province are required to keep a record of all the out-door and in-door treated patients in an “**Abstract Register**”. From the information recorded in the “Abstract Register” and other relevant registers, all types of Health Institutions are required to supply annual statistical returns to the District Health Offices.

ii) Other Departments/Organizations

Pakistan Railways, Home Department, WAPDA, Auqaf Department and Punjab Employees' Social Security Institutions (PESSI) collect the annual Statistics from their health institutions and compile the data by Tehsil, District, Divisional, and Provincial levels at their Head Offices.

Punjab Health Statistics Report Link

Annual Report of Health is uploaded/published on the official website of the Bureau of Statistics Punjab with free access for everyone.

<http://bos.gop.pk/publicationreports#PHS>

Important Definitions

Health Institution:

A health institution is defined as an institution that provides health services i.e. curative and preventive to all/specific class of the public as out-door/ in-door patients.

This publication covers about 5283 institutions delivering heavily subsidized healthcare to the public. These facilities are broadly divided into the following groups (i) Basic Health Units (BHUs), (ii) Sub Health Centers (SHC), (iii) Rural Health Centers (RHCs), (iv) Maternal and Child Health Centers (MCH), (v) Tuberculosis Centers (TB), (vi) Dispensary (vii) Hospitals.

Sub Health Center (S.H.Cs):

These facilities are staffed with a physician, one Lady Health Visitor, and a midwife. It provides primary health care services to the catchment areas where there are no basic health units. 169 SHCs are covered by this publication.

Basic Health Unit (B.H.U.s):

It is the first level of health care considered to be essential to maintain adequate health and protection from disease. Typically, each Union Council has a BHU which has 2 beds, but in some cases there are two facilities per union council and serves a catchment population of about 10,000 to 25,000.

This publication covers 2533 BHUs spread across the length and breadth of the province.

Rural Health Centers (RHCs):

BHUs are almost all over the place in rural areas, they have limited usefulness for patients seeking slightly advanced but not specialized care. To serve such patients, the health system has established a tier of facilities known as RHCs. The RHCs are better equipped than BHUs to manage minor emergencies and surgeries. Typically, the RHC has 15-20 beds inpatient facility and each serves a catchment population of about 100,000. This is envisaged as a health facility that is open 24/7.

This publication covers about 374 RHCs across the province.

Maternal and Child Health Centers (MCHs):

These facilities provide maternal, neonatal and child health services including reproductive health and family planning and are often located in urban and large rural areas. Maternal and child health centers are managed by Lady Health Visitors and assisted by a facility-based trained traditional birth attendant. This publication covers 275 MCHs.

Important Definitions

Tuberculosis Centers (TBs):

These centers detect and manage tuberculosis (TB) patients. This Publication covers 37 T.B Clinics across the Punjab.

Dispensaries:

A dispensary is an institution having less than ten beds. This publication covers about 1185 dispensaries outlets in the province.

Hospital:

Hospital is an institution having ten or more than ten beds.

The Hospitals are broadly divided into three types: (i) Tehsil Headquarter (THQ), Hospitals, (ii) District Headquarter (DHQ) Hospitals (iii) Teaching Hospitals.

Tehsil Headquarter Hospitals:

These hospitals serve a catchment population of about 0.5 - 1 million, providing a range of preventive, clinical and rehabilitative services. Presently Tehsil Headquarters have 40 - 60 beds inpatient facility and a range of outpatient services.

District Headquarter Hospitals:

These hospitals cover a catchment population of 1 - 3 million, having 125 - 250 beds capacity. The district headquarters hospital provides promotive, preventive, curative, advanced diagnostic and inpatient specialized services.

Teaching Hospitals:

These hospitals deal with the most advanced healthcare requirements and prepare doctors and paramedical staff for future needs. These hospitals are located in urban centers, exclusively in all divisional headquarters.

There are 48 teaching hospitals in the province, of which 18 are in Lahore.

Trauma Centers:

A trauma center is a hospital equipped and staffed to provide care for patients suffering from major traumatic injuries such as falls, motor vehicle collisions, or gunshot wounds. A trauma center may also refer to an emergency department (also known as a "casualty department" or "accident and emergency") without the presence of specialized services to care for victims of major trauma.

This publication covers about 9 trauma centers outlets in the province.

Statistical Abstract: As on 1st Jan, 2023

(Number)

Health Institutions	Punjab	Population	Population per Health Institution ¹
Health Institutions	4,975	110,264,125	22,164
i) Hospitals	874	110,264,125	126,160
ii) Dispensaries	1,185	110,264,125	93,050
iii) Rural Health Centers	374	110,264,125	294,824
iv) Basic Health Units	2,533	110,264,125	43,531
v) Trauma Centers	9	110,264,125	12,251,569

(Progressive Number)

Medical Personnel	Punjab	Population (Million)	Per Million Population
Registered Doctors			
a) Doctors (MBBS & Specialists)	150,009	110.01	1,364
b) Dentists (BDS & Specialists)	31,522	110.01	287
ii) Nurses	88,973	110.01	809
iii) Lady Health Visitors	16,921	110.01	154
iv) Midwives	18,095	110.01	164

1. Population per Health Institution is calculated by: Population (000's)/No. of Health Institutions in Punjab

2. Medical Personnel per Million Population is calculated by: Medical Personnel in Punjab/Population (Million)

Table 1:- Health Institutions and Bed Strength, The Punjab: As on 01-01-2023

(Number)					
Health Facilities	2019	2020	2021	2022	2023
1. Number of Institutions					
i) Hospitals	389	390	391	399	874
ii) Dispensaries	1,201	1,411	1,411	1,139	1,185
iii) Rural Health Centers	319	358	378	338	374
iv) T.B Clinics	17	15	36	37	37
v) Basic Health Units	2,510	2,587	2,587	2,574	2,533
vi) Sub-Health Centers	221	186	193	168	169
vii) M.C.H Centers	280	280	278	295	275
viii) Trauma Centers ¹	-	-	9	11	9
2. Number of Beds					
i) Hospitals	48,804	59,574	59,744	61350	71334
ii) Dispensaries	379	89	127	93	93
iii) Rural Health Centers	6,087	7,182	6,356	6377	6536
iv) T.B Clinics	141	154	57	105	118
v) Basic Health Units	4,948	5,131	5,053	5172	4926
vi) Trauma Centers	-	-	299	207	231

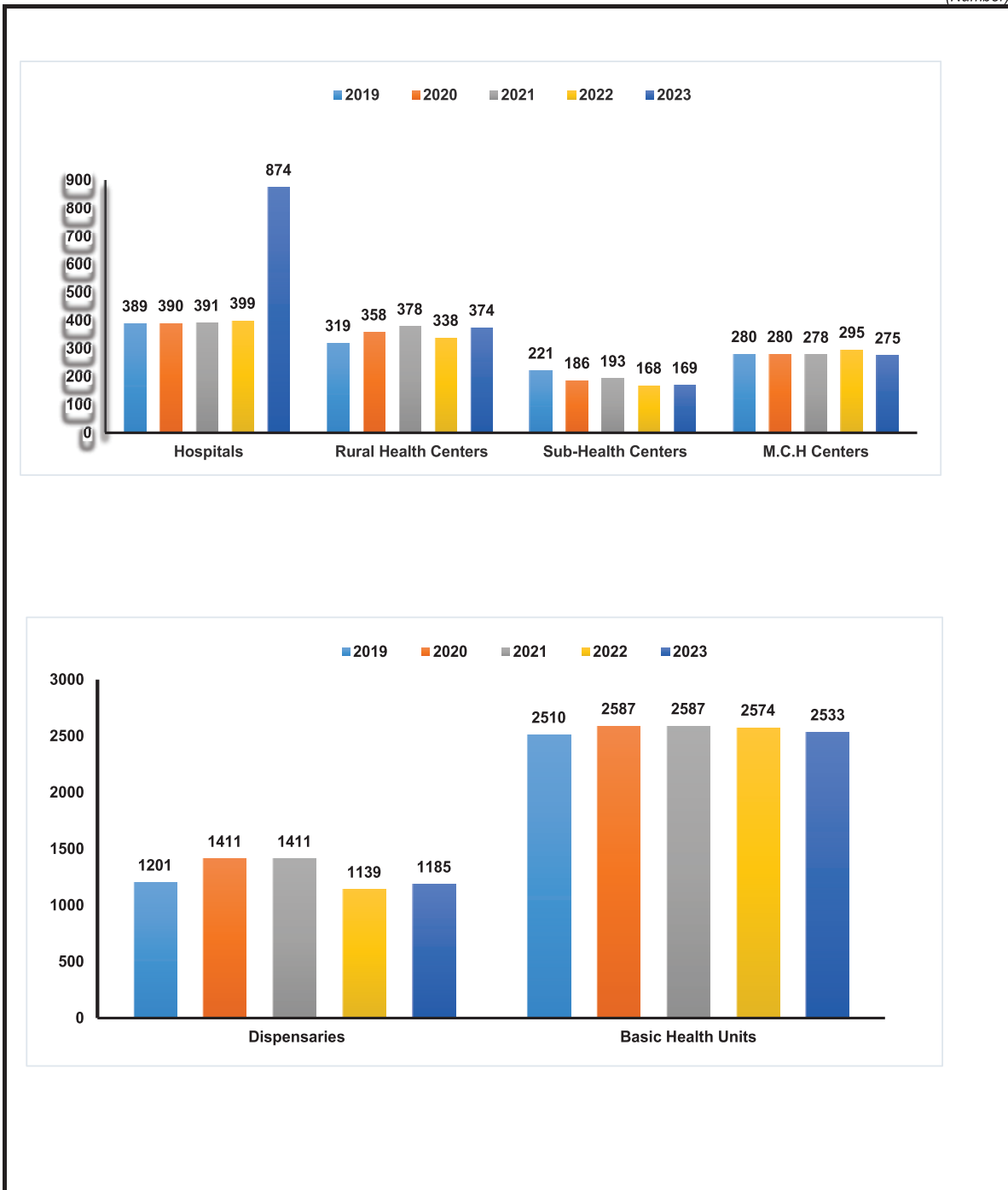
1. Trauma Centers are new addition in Punjab Health Statistics 2021

Source:- i) Health Department, Government of the Punjab
 iii) Aqaf Department, Government of the Punjab
 v) Punjab Employee's Social Security Institutions
 vii) Punjab Health Care commission

ii) Home Department (I.G. Prisons)
 iv) Pakistan Railways.
 vi) Director General Medical Services, WAPDA

Figure 1: Health Institutions, The Punjab: 2019-2023

(Number)

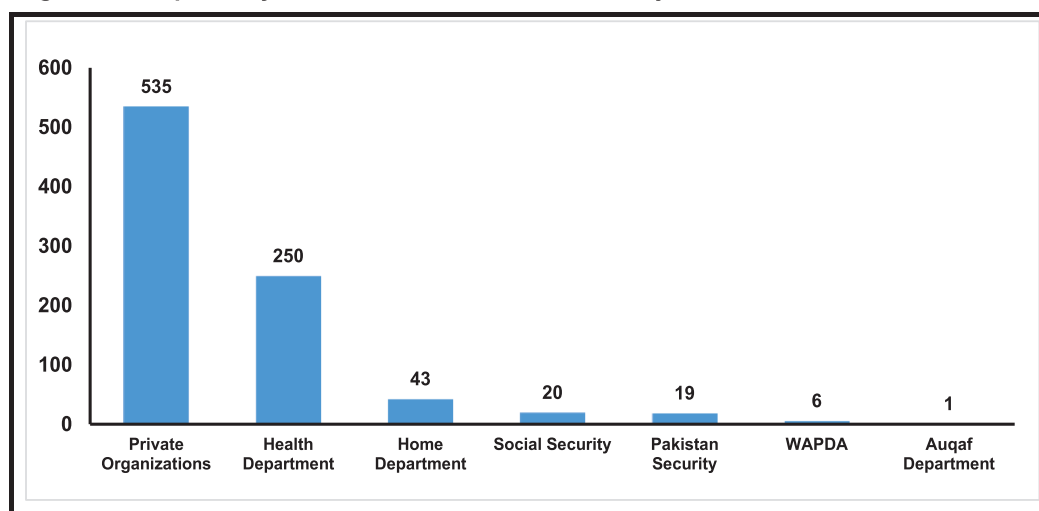


Source:- i) Health Department, Government of the Punjab
 iii) Auqaf Department, Government of the Punjab
 v) Punjab Employee's Social Security Institutions
 vii) Punjab Health Care commission

ii) Home Department (I.G. Prisons)
 iv) Pakistan Railways
 vi) Director General Medical Services, WAPDA

Table 2:- Health Institutions and Their Bed Strength by Administrative Control, The Punjab, As on 01-01-2023

Under Administrative Control	(Number)															
	Hospitals		Dispensaries		R.H.Cs. Total		B.H.U.s. Total		T.B. Clinics		S.H Centers		M.C.H. Centres		Trauma Centers	
	No.	Beds	No.	Beds	No.	Beds	No.	Beds	No.	Beds	No.	Beds	No.	Beds	No.	Beds
The Punjab	874	71,334	1185	93	374	6536	2533	4926	37	118	169	8	275	32	9	231
i) Health Department	250	53,340	998	93	332	6,536	2,463	4,926	37	118	168	8	274	32	9	207
ii) Home Department	43	1,020	-	-	-	-	-	-	-	-	-	-	-	-	-	-
iii) Auqaf Department	1	120	16	-	-	-	-	-	-	-	-	-	-	-	-	-
iv) Social Security	20	1,905	138	-	42	-	70	-	-	-	-	-	-	-	-	-
v) Pakistan Railways	19	950	16	-	-	-	-	-	-	-	-	-	-	-	-	-
vi) WAPDA	6	470	17	-	-	-	-	-	-	-	-	-	-	-	-	-
vii) Private Organizations	535	13,529	-	-	-	-	-	-	-	-	-	-	-	-	-	-

Figure 2: Hospitals by Administrative Control, The Punjab: As on 01-01-2023

Source:- i) Health Department, Government of the Punjab
 iii) Auqaf Department, Government of the Punjab
 v) Punjab Employee's Social Security Institutions

ii) Home Department (I.G. Prisons)
 iv) Pakistan Railways
 vi) Director General Medical Services, WAPDA

Table 3:- Health Institutions by Division, District & Tehsil, The Punjab: As on 01-01-2023

(Number)

Division/ District/ Tehsil	Hospitals		Dispen-saries		R.H.Cs.		B.H.U.s.		T.B. Clinics		S.H Centers		M.C.H. Centers		Trauma Centers	
	No.	Beds	No.	Beds	No.	Beds	No.	Beds	No.	Beds	No.	Beds	No.	Beds	No.	Beds
The Punjab	339	57,805	1,185	93	374	6,536	2,533	4,926	37	118	169	8	275	32	9	231
Bahawalpur Division	24	4,539	164	4	45	816	288	550	3	-	27	-	26	-	-	-
Bahawalnagar District	6	879	29	-	10	200	104	194	-	-	27	-	9	-	-	-
Bahawalnagar	2	509	9	-	2	40	27	40	-	-	6	-	4	-	-	-
Chishtian	1	120	3	-	2	40	24	48	-	-	7	-	1	-	-	-
Fort Abbas	1	100	4	-	1	20	14	28	-	-	3	-	1	-	-	-
Haroonabad	1	90	7	-	3	60	21	42	-	-	9	-	2	-	-	-
Minchinabad	1	60	6	-	2	40	18	36	-	-	2	-	1	-	-	-
Bahawalpur District	12	2,467	70	4	13	240	77	150	1	-	-	-	10	-	-	-
Ahmadpur East	1	100	22	-	4	80	26	50	-	-	-	-	2	-	-	-
Bahawalpur City	8	2137	8	-	1	-	6	10	-	-	-	-	6	-	-	-
Bahawalpur Sadar	-	-	15	-	3	60	11	22	-	-	-	-	-	-	-	-
Hasilpur	1	100	10	-	2	40	11	22	1	-	-	-	2	-	-	-
Khairpur Tamewali	1	60	1	-	-	-	8	16	-	-	-	-	-	-	-	-
Yazman	1	70	14	4	3	60	15	30	-	-	-	-	-	-	-	-
R.Y.Khan District	6	1,193	65	-	22	376	107	206	2	-	-	-	7	-	-	-
Khanpur	2	110	18	-	4	68	23	44	1	-	-	-	-	-	-	-
Liaquatpur	1	60	17	-	6	88	29	56	-	-	-	-	-	-	-	-
R. Y. Khan	2	963	15	-	6	100	31	60	-	-	-	-	5	-	-	-
Sadiqabad	1	60	15	-	6	120	24	46	1	-	-	-	2	-	-	-
D.G.Khan Division	26	2,982	115	-	37	705	199	374	-	-	13	-	12	4	2	65
D.G.Khan District	7	1,206	23	-	10	180	55	106	-	-	-	-	5	-	2	65
D. G. Khan	3	1026	8	-	5	80	15	28	-	-	-	-	4	-	1	45
D.G. Khan (Tribal Area)	1	20	10	-	1	20	8	16	-	-	-	-	-	-	-	-
Kot Chutta	2	60	2	-	2	40	15	30	-	-	-	-	-	-	-	-
Taunsa Sharif	1	100	3	-	2	40	17	32	-	-	-	-	1	-	1	20
Layyah District	8	632	34	-	6	120	36	72	-	-	13	-	2	-	-	-
Choubara	1	40	8	-	-	-	6	12	-	-	1	-	1	-	-	-
Karor	2	120	16	-	1	20	16	32	-	-	6	-	-	-	-	-
Layyah	5	472	10	-	5	100	14	28	-	-	6	-	1	-	-	-
Muzaffargarh District	6	696	45	-	14	260	76	132	-	-	-	-	4	-	-	-
Alipur	1	62	5	-	2	40	14	26	-	-	-	-	1	-	-	-
Jatoi	1	60	5	-	1	20	13	26	-	-	-	-	-	-	-	-
Kotaddu	2	184	11	-	3	60	22	30	-	-	-	-	1	-	-	-
Muzaffargarh	2	390	24	-	8	140	27	50	-	-	-	-	2	-	-	-
Rajanpur District	5	448	13	-	7	145	32	64	-	-	-	-	1	4	-	-
Jampur	1	120	8	-	4	80	13	26	-	-	-	-	1	4	-	-
Rajanpur	2	228	5	-	2	45	12	24	-	-	-	-	-	-	-	-
Rojhan	2	100	-	-	1	20	7	14	-	-	-	-	-	-	-	-

Source:- i) Health Department, Government of the Punjab
 iii) Auqaf Department, Government of the Punjab
 v) Punjab Employee's Social Security Institutions

ii) Home Department (I.G. Prisons)
 iv) Pakistan Railways.
 vi) Director General Medical Services, WAPDA

Table 3:- Health Institutions by Division, District & Tehsil, The Punjab: As on 01-01-2023 -Contd.

(Number)																
Division/ District/ Tehsil	Hospitals		Dispen-saries		R.H.Cs.		B.H.Us.		T.B. Clinics		S.H Centers		M.C.H. Centers		Trauma Centers	
	No.	Beds	No.	Beds	No.	Beds	No.	Beds	No.	Beds	No.	Beds	No.	Beds	No.	Beds
Faisalabad Division	40	5,757	232	18	42	738	346	666	3	-	21	-	13	4	1	16
Chiniot District	3	174	12	18	3	18	38	72	1	-	-	-	2	4	-	-
Bhowana	1	20	1	-	-	-	17	32	-	-	-	-	-	-	-	-
Chiniot	1	94	6	10	1	6	10	18	1	-	-	-	2	4	-	-
Lalian	1	60	5	8	2	12	11	22	-	-	-	-	-	-	-	-
Faisalabad District	21	4,077	116	-	21	340	173	336	-	-	7	-	6	-	-	-
Chak Jhumra	1	60	7	-	2	20	14	28	-	-	-	-	-	-	-	-
Faisalabad City	15	3807	41	-	3	-	6	6	-	-	-	-	5	-	-	-
Faisalabad Sadar	-	-	24	-	2	40	49	98	-	-	1	-	-	-	-	-
Jaranwala	3	110	20	-	6	120	50	100	-	-	1	-	-	-	-	-
Sammundri	1	60	16	-	4	80	30	58	-	-	1	-	1	-	-	-
Tandlianwala	1	40	8	-	4	80	24	46	-	-	4	-	-	-	-	-
Jhang District	8	606	75	-	10	220	61	118	1	-	-	-	2	-	1	16
Ahmadpur Sial	1	60	12	-	2	40	7	14	-	-	-	-	-	-	-	-
Jhang	1	60	10	-	1	20	9	18	-	-	-	-	-	-	-	-
Shorkot	4	370	43	-	5	120	31	60	1	-	-	-	-	-	1	16
18 hazari	2	116	10	-	2	40	14	26	-	-	-	-	2	-	-	-
T. T. Singh District	8	900	29	-	8	160	74	140	1	-	14	-	3	-	-	-
Gojra	1	170	6	-	2	40	25	48	-	-	2	-	-	-	-	-
Kamalia	2	139	6	-	1	20	9	16	-	-	1	-	1	-	-	-
Pir Mahal	2	264	7	-	2	40	13	24	-	-	6	-	1	-	-	-
T.T. Singh	3	327	10	-	3	60	27	52	1	-	5	-	1	-	-	-
Gujranwala Division	46	4,430	124	33	59	1,040	421	820	4	10	65	-	48	18	1	70
Gujranwala District	11	1,400	59	3	14	240	99	188	1	-	32	-	10	-	-	-
Gujranwala	6	976	29	3	3	60	29	54	-	-	8	-	8	-	-	-
Kamoke	1	60	10	-	2	20	19	36	-	-	3	-	-	-	-	-
Noshehra Virkan	1	40	5	-	1	20	24	46	-	-	-	-	-	-	-	-
Wazirabad	3	324	15	-	8	140	27	52	1	-	21	-	2	-	-	-
Gujrat District	15	585	6	-	10	180	93	182	-	-	1	-	10	10	1	70
Gujrat	6	266	5	-	5	80	49	94	-	-	-	-	9	9	-	-
Kharian	8	239	1	-	4	80	36	72	-	-	1	-	1	1	1	70
Sarai Alamgir	1	80	-	-	1	20	8	16	-	-	-	-	-	-	-	-
Hafizabad District	2	370	16	-	8	140	33	64	1	-	-	-	4	8	-	-
Hafizabad	1	310	11	-	5	80	18	34	1	-	-	-	2	4	-	-
Pindi Bhattian	1	60	5	-	3	60	15	30	-	-	-	-	2	4	-	-
M. B. Din District	5	416	8	-	11	200	49	96	-	-	21	-	5	-	-	-
Malakwal	1	60	2	-	3	60	13	26	-	-	6	-	1	-	-	-
Mandi Bahauddin	2	278	1	-	5	80	19	36	-	-	9	-	3	-	-	-
Phalia	2	78	5	-	3	60	17	34	-	-	6	-	1	-	-	-

Source:- i) Health Department, Government of the Punjab
 iii) Auqaf Department, Government of the Punjab
 v) Punjab Employee's Social Security Institutions

ii) Home Department (I.G. Prisons)
 iv) Pakistan Railways.
 vi) Director General Medical Services, WAPDA

Table 3:- Health Institutions by Division, District & Tehsil, The Punjab: As on 01-01-2023 -Contd.
(Number)

Division/ District/ Tehsil	Hospitals		Dispen-saries		R.H.Cs.		B.H.U.s.		T.B. Clinics		S.H Centers		M.C.H. Centers		Trauma Centers	
	No.	Beds	No.	Beds	No.	Beds	No.	Beds	No.	Beds	No.	Beds	No.	Beds	No.	Beds
Narowal District	3	392	8	20	7	140	57	114	1	5	-	-	4	-	-	-
Narowal	2	312	4	-	2	40	18	36	-	-	-	-	2	-	-	-
Shakargarh	1	80	3	8	2	40	25	50	1	5	-	-	1	-	-	-
Zafarwal	-	-	1	12	3	60	14	28	-	-	-	-	1	-	-	-
Sialkot District	10	1,267	27	10	9	140	90	176	1	5	11	-	15	-	-	-
Daska	1	350	4	5	3	40	23	44	1	5	4	-	2	-	-	-
Pasrur	1	80	7	-	2	40	28	56	-	-	4	-	2	-	-	-
Sambrial	1	40	4	5	2	40	11	22	-	-	2	-	1	-	-	-
Sialkot	7	797	12	-	2	20	28	54	-	-	1	-	10	-	-	-
Lahore Division	73	25,426	198	-	56	800	223	432	22	8	4	8	84	-	3	70
Kasur District	8	639	32	-	13	220	83	162	1	-	-	-	8	-	1	20
Chunian	1	70	8	-	4	60	21	42	-	-	-	-	2	-	-	-
Kasur	5	449	11	-	6	100	26	50	-	-	-	-	4	-	-	-
Kot Rahadha Kishan	1	60	4	-	-	-	14	26	-	-	-	-	1	-	-	-
Pattoki	1	60	9	-	3	60	22	44	1	-	-	-	1	-	1	20
Lahore District	50	23,031	118	-	25	272	7	14	21	8	4	8	60	-	2	50
Lahore Cantt	31	17,936	71	-	15	80	-	-	8	-	3	6	33	-	1	25
Lahore City	3	108	10	-	6	120	4	8	-	-	-	-	-	-	-	-
Model Town	5	2,817	7	-	1	15	-	-	6	-	-	-	10	-	-	-
Raiwind	7	440	11	-	1	17	-	-	3	-	-	-	10	-	1	25
Shalamar	4	1,730	19	-	2	40	3	6	4	8	1	2	7	-	-	-
Nankana Sahib District	4	318	23	-	9	168	49	94	-	-	-	-	5	-	-	-
Nankana	1	120	12	-	7	144	31	60	-	-	-	-	4	-	-	-
Sangla Hill	2	104	7	-	-	-	10	20	-	-	-	-	1	-	-	-
Shahkot	1	94	4	-	2	24	8	14	-	-	-	-	-	-	-	-
Sheikhupura District	11	1,438	25	-	9	140	84	162	-	-	-	-	11	-	-	-
Ferozewala	1	70	1	-	1	20	13	24	-	-	-	-	-	-	-	-
Muridke	1	75	2	-	2	20	19	38	-	-	-	-	3	-	-	-
Safdarabad	1	60	-	-	1	20	14	28	-	-	-	-	1	-	-	-
Sharaqpur	1	60	-	-	-	-	6	12	-	-	-	-	1	-	-	-
Sheikhupura	7	1173	22	-	5	80	32	60	-	-	-	-	6	-	-	-
Multan Division	38	4,334	112	12	37	700	288	570	2	-	-	-	33	2	1	10
Khanewal District	7	473	11	-	10	180	81	162	-	-	-	-	4	-	-	-
Jahanian	1	60	2	-	1	20	11	22	-	-	-	-	-	-	-	-
Kabirwala	1	60	3	-	5	100	30	60	-	-	-	-	1	-	-	-
Khanewal	4	293	2	-	2	40	20	40	-	-	-	-	2	-	-	-
Mian Channu	1	60	4	-	2	20	20	40	-	-	-	-	1	-	-	-

Source:- i) Health Department, Government of the Punjab
 iii) Auqaf Department, Government of the Punjab
 v) Punjab Employee's Social Security Institutions

ii) Home Department (I.G. Prisons)
 iv) Pakistan Railways.
 vi) Director General Medical Services, WAPDA

Table 3:- Health Institutions by Division, District & Tehsil, The Punjab: As on 01-01-2023 -Contd.

Division/ District/ Tehsil	(Number)															
	Hospitals		Dispen-saries		R.H.Cs.		B.H.U.s.		T.B. Clinics		S.H Centers		M.C.H. Centers		Trauma Centers	
	No.	Beds	No.	Beds	No.	Beds	No.	Beds	No.	Beds	No.	Beds	No.	Beds	No.	Beds
Lodhran District	5	343	17	12	5	80	48	96	-	-	-	-	1	2	1	10
Dunyapur	1	60	7	4	2	40	14	28	-	-	-	-	-	-	1	10
Karor Pacca	1	80	3	2	-	-	16	32	-	-	-	-	1	2	-	-
Lodhran	3	203	7	6	3	40	18	36	-	-	-	-	-	-	-	-
Multan District	22	2,905	47	-	8	160	84	164	2	-	-	-	20	-	-	-
Jalalpur Pirwala	1	60	8	-	1	20	16	32	-	-	-	-	-	-	-	-
Multan City	15	625	24	-	-	-	4	4	2	-	-	-	14	-	-	-
Multan Sadar	4	2150	9	-	5	100	50	100	-	-	-	-	5	-	-	-
Shujabad	2	70	6	-	2	40	14	28	-	-	-	-	1	-	-	-
Vehari District	4	613	37	-	14	280	75	148	-	-	-	-	8	-	-	-
Burewala	1	150	10	-	3	60	24	48	-	-	-	-	4	-	-	-
Mailsi	1	150	12	-	4	80	28	56	-	-	-	-	1	-	-	-
Vehari	2	313	15	-	7	140	23	44	-	-	-	-	3	-	-	-
Rawalpindi Division	35	5,115	75	26	37	581	280	546	-	-	2	-	23	-	1	-
Attock District	7	481	9	-	6	110	62	124	-	-	2	-	3	-	-	-
Attock	2	161	4	-	-	-	8	16	-	-	-	-	1	-	-	-
Fatehjang	1	40	1	-	1	20	12	24	-	-	2	-	1	-	-	-
Hassanabdal	1	40	-	-	-	-	7	14	-	-	-	-	-	-	-	-
Hazro	1	100	1	-	2	30	11	22	-	-	-	-	-	-	-	-
Jand	1	40	2	-	2	40	14	28	-	-	-	-	-	-	-	-
Pindigheb	1	100	1	-	1	20	10	20	-	-	-	-	1	-	-	-
Chakwal District	6	390	18	-	16	210	63	126	-	-	-	-	6	-	1	-
Chakwal	2	210	11	-	10	90	25	50	-	-	-	-	4	-	-	-
Choa Saidan Shah	1	40	3	-	1	20	8	16	-	-	-	-	1	-	-	-
Kalar Kahar	1	40	2	-	1	20	6	12	-	-	-	-	-	-	1	-
Lawa	-	-	1	-	-	-	-	-	-	-	-	-	-	-	-	-
Talagang	2	100	1	-	4	80	24	48	-	-	-	-	1	-	-	-
Jhelum District	7	435	26	-	7	120	48	96	-	-	-	-	6	-	-	-
Dina	-	-	2	-	1	20	10	20	-	-	-	-	-	-	-	-
Jhelum	5	315	6	-	2	20	11	22	-	-	-	-	3	-	-	-
PD Khan	1	60	11	-	3	60	14	28	-	-	-	-	2	-	-	-
Sohawa	1	60	7	-	1	20	13	26	-	-	-	-	1	-	-	-
Rawalpindi District	15	3,809	22	26	8	141	107	200	-	-	-	-	8	-	-	-
Gujar Khan	1	110	3	2	3	50	28	56	-	-	-	-	-	-	-	-
Kahuta	1	60	-	-	-	-	10	20	-	-	-	-	-	-	-	-
Kallar Syedan	1	60	1	2	-	-	9	18	-	-	-	-	-	-	-	-
Kotli Sattian	1	60	-	-	1	20	9	18	-	-	-	-	-	-	-	-
Murree	1	82	3	2	1	20	17	28	-	-	-	-	-	-	-	-
Rawalpindi	8	3,297	15	20	3	51	28	48	-	-	-	-	8	-	-	-
Taxila	2	140	-	-	-	-	6	12	-	-	-	-	-	-	-	-

Source:- i) Health Department, Government of the Punjab
 iii) Auqaf Department, Government of the Punjab
 v) Punjab Employee's Social Security Institutions

ii) Home Department (I.G. Prisons)
 iv) Pakistan Railways.
 vi) Director General Medical Services, WAPDA

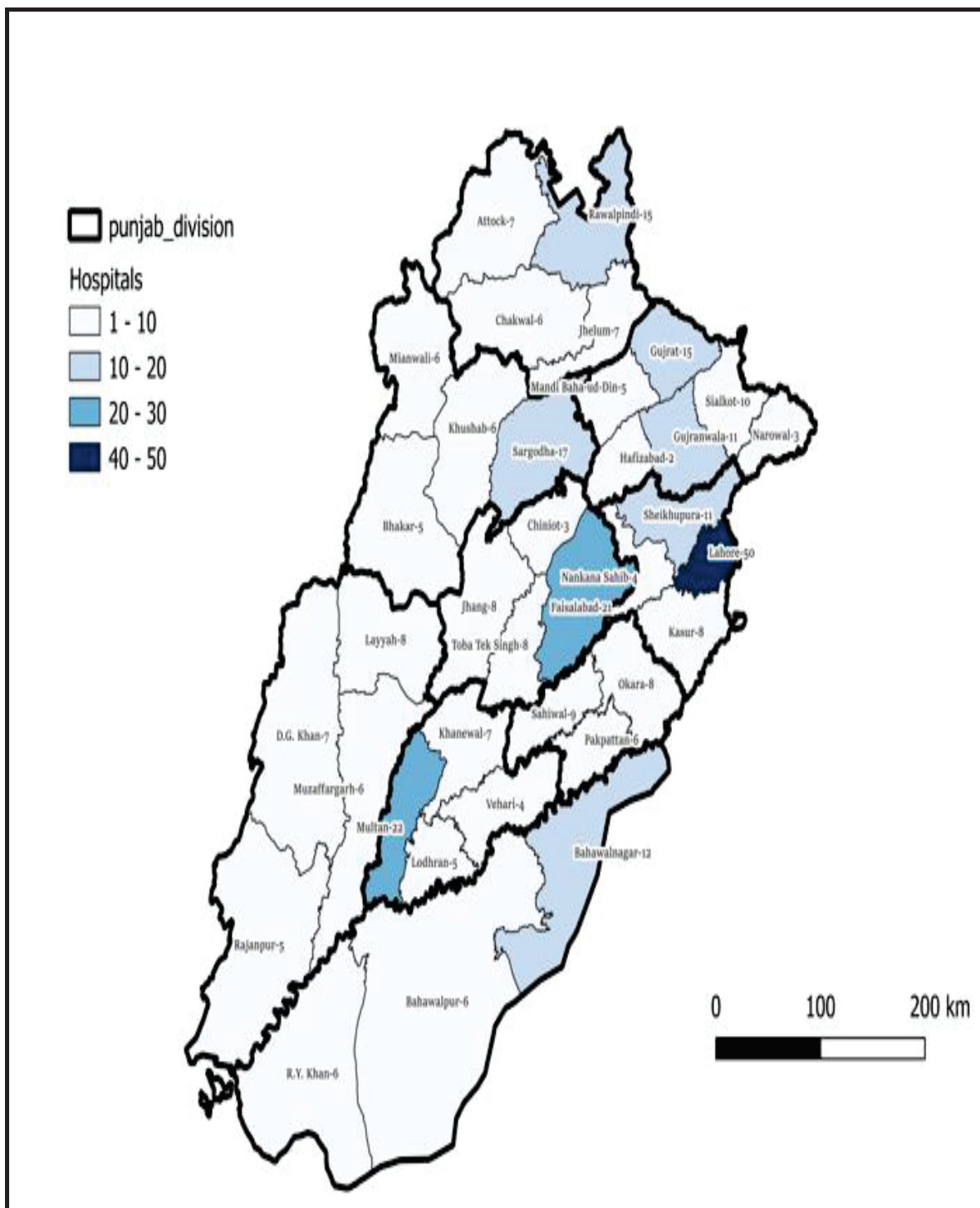
Table 3:- Health Institutions by Division, District & Tehsil, The Punjab: As on 01-01-2023-Contd.

Division/ District/ Tehsil	(Number)															
	Hospitals		Dispen-saries		R.H.Cs.		B.H.Us.		T.B. Clinics		S.H Centers		M.C.H. Centers		Trauma Centers	
	No.	Beds	No.	Beds	No.	Beds	No.	Beds	No.	Beds	No.	Beds	No.	Beds	No.	Beds
Sahiwal Division	23	2,106	65	-	26	520	230	454	2	-	23	-	17	-	-	-
Okara District	8	735	29	-	10	200	97	192	1	-	-	-	9	-	-	-
Depalpur	2	160	9	-	6	120	48	96	-	-	-	-	3	-	-	-
Okara	5	515	13	-	2	40	31	60	1	-	-	-	5	-	-	-
Renala Khurd	1	60	7	-	2	40	18	36	-	-	-	-	1	-	-	-
Pakpattan District	6	340	10	-	5	100	55	110	1	-	5	-	2	-	-	-
Arifwala	2	192	-	-	2	40	28	56	-	-	-	-	1	-	-	-
Pakpattan	4	148	10	-	3	60	27	54	1	-	5	-	1	-	-	-
Sahiwal District	9	1,031	26	-	11	220	78	152	-	-	18	-	6	-	-	-
Chichawatni	1	140	9	-	5	100	38	74	-	-	8	-	3	-	-	-
Sahiwal	8	891	17	-	6	120	40	78	-	-	10	-	3	-	-	-
Sargodha Division	34	3,116	100	-	35	636	258	514	1	100	14	-	19	4	-	-
Bhakkar District	5	612	30	-	6	112	40	80	-	-	13	-	2	4	-	-
Bhakkar	2	402	13	-	2	40	15	30	-	-	3	-	1	2	-	-
Darya Khan	1	70	6	-	2	20	8	16	-	-	7	-	-	-	-	-
Kalur Kot	1	80	5	-	1	32	10	20	-	-	3	-	1	2	-	-
Mankera	1	60	6	-	1	20	7	14	-	-	-	-	-	-	-	-
Khushab District	6	410	38	-	6	60	45	88	-	-	-	-	7	-	-	-
Khushab	3	250	13	-	4	48	16	32	-	-	-	-	4	-	-	-
Nurpur	1	60	2	-	1	12	8	16	-	-	-	-	3	-	-	-
Naushera	1	40	15	-	1	-	9	16	-	-	-	-	-	-	-	-
Qaidabad	1	60	8	-	-	-	12	24	-	-	-	-	-	-	-	-
Mianwali District	6	740	20	-	10	224	42	84	-	-	-	-	2	-	-	-
Isa Khel	2	110	2	-	3	84	10	20	-	-	-	-	-	-	-	-
Mianwali	3	580	11	-	5	100	22	44	-	-	-	-	2	-	-	-
Piplan	1	50	7	-	2	40	10	20	-	-	-	-	-	-	-	-
Sargodha District	17	1,354	12	-	13	240	131	262	1	100	1	-	8	-	-	-
Bhalwal	1	60	1	-	2	20	15	30	-	-	-	-	-	-	-	-
Bhera	1	40	1	-	1	20	9	18	-	-	-	-	2	-	-	-
Kot Momin	1	40	2	-	5	100	18	36	-	-	-	-	-	-	-	-
Sahiwal	1	40	-	-	1	20	13	26	-	-	-	-	1	-	-	-
Sargodha	10	1076	4	-	3	60	46	92	1	100	1	-	5	-	-	-
Shahpur	2	58	3	-	1	20	13	26	-	-	-	-	-	-	-	-
Sillanwali	1	40	1	-	-	-	17	34	-	-	-	-	-	-	-	-

Source:- i) Health Department, Government of the Punjab
 iii) Auqaf Department, Government of the Punjab
 v) Punjab Employee's Social Security Institutions

ii) Home Department (I.G. Prisons)
 iv) Pakistan Railways.
 vi) Director General Medical Services, WAPDA

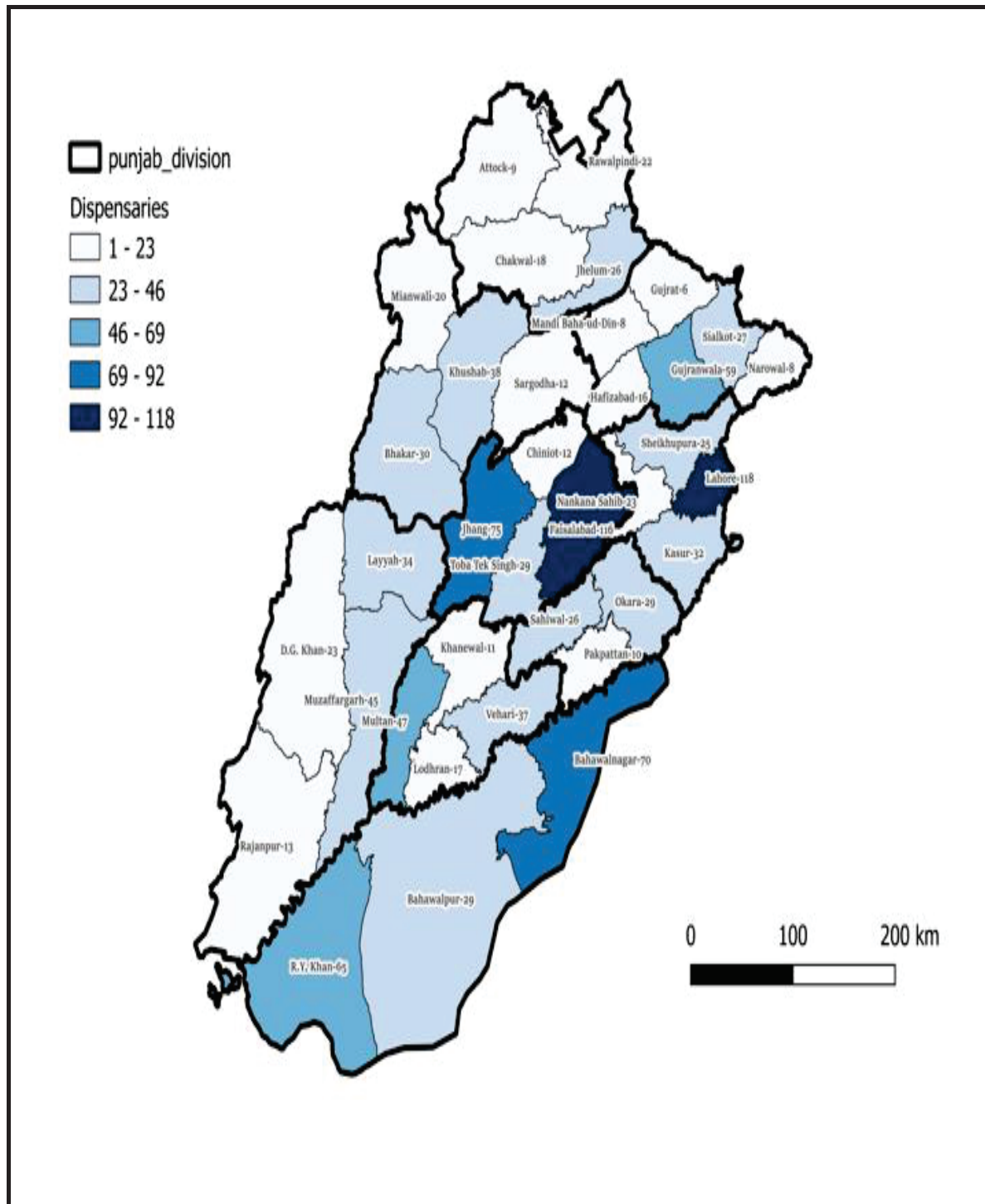
Figure 3: Total Number of Hospitals by District, The Punjab: As on 01-01-2023



Source:- i) Health Department, Government of the Punjab
 iii) Auqaf Department, Government of the Punjab
 v) Punjab Employee's Social Security Institutions

ii) Home Department (I.G. Prisons)
 iv) Pakistan Railways.
 vi) Director General Medical Services, WAPDA

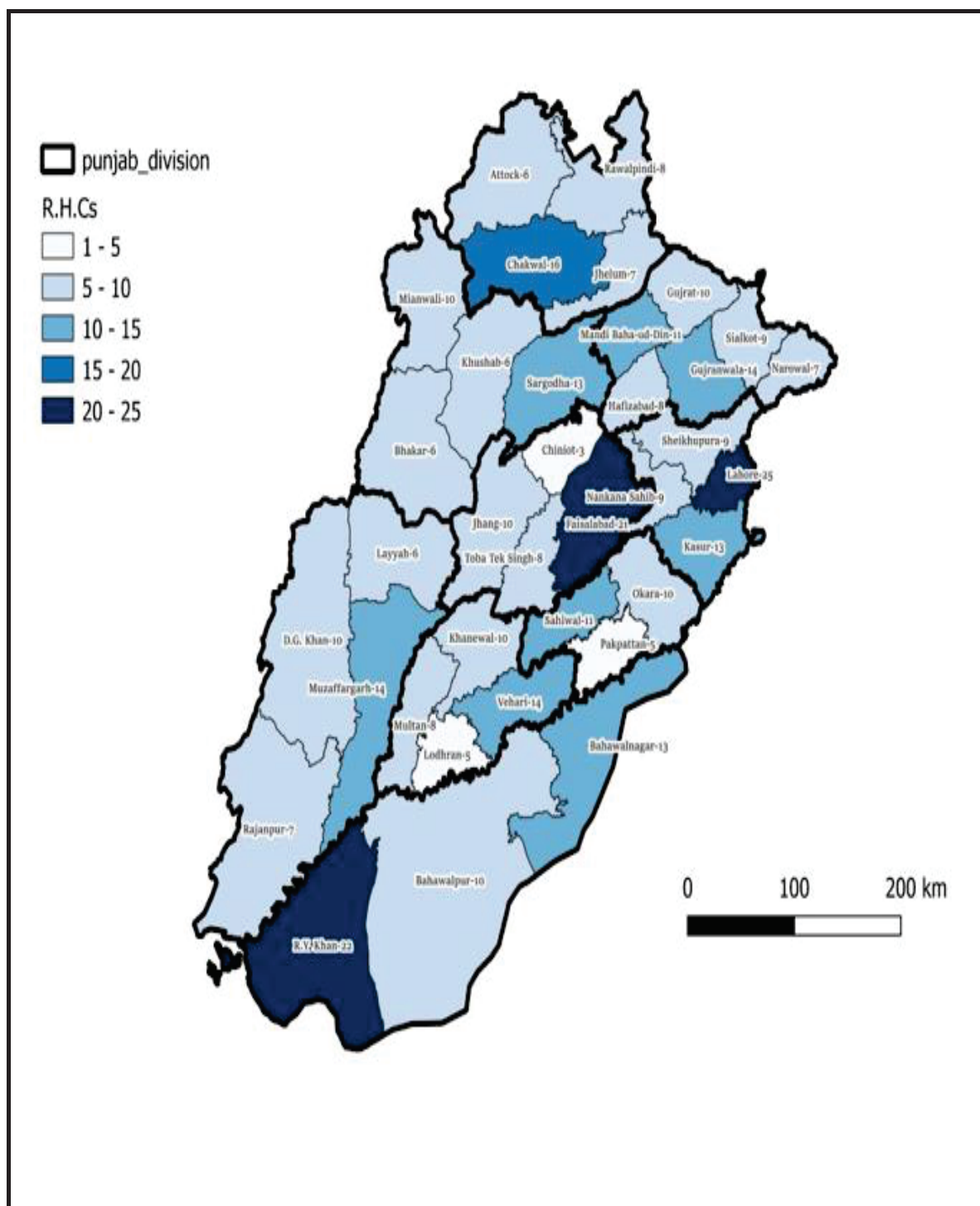
Figure 4: Total Number of Dispensaries by District, The Punjab: As on 01-01-2023



Source:- i) Health Department, Government of the Punjab
 iii) Auqaf Department, Government of the Punjab
 v) Punjab Employee's Social Security Institutions

ii) Home Department (I.G. Prisons)
 iv) Pakistan Railways.
 vi) Director General Medical Services, WAPDA

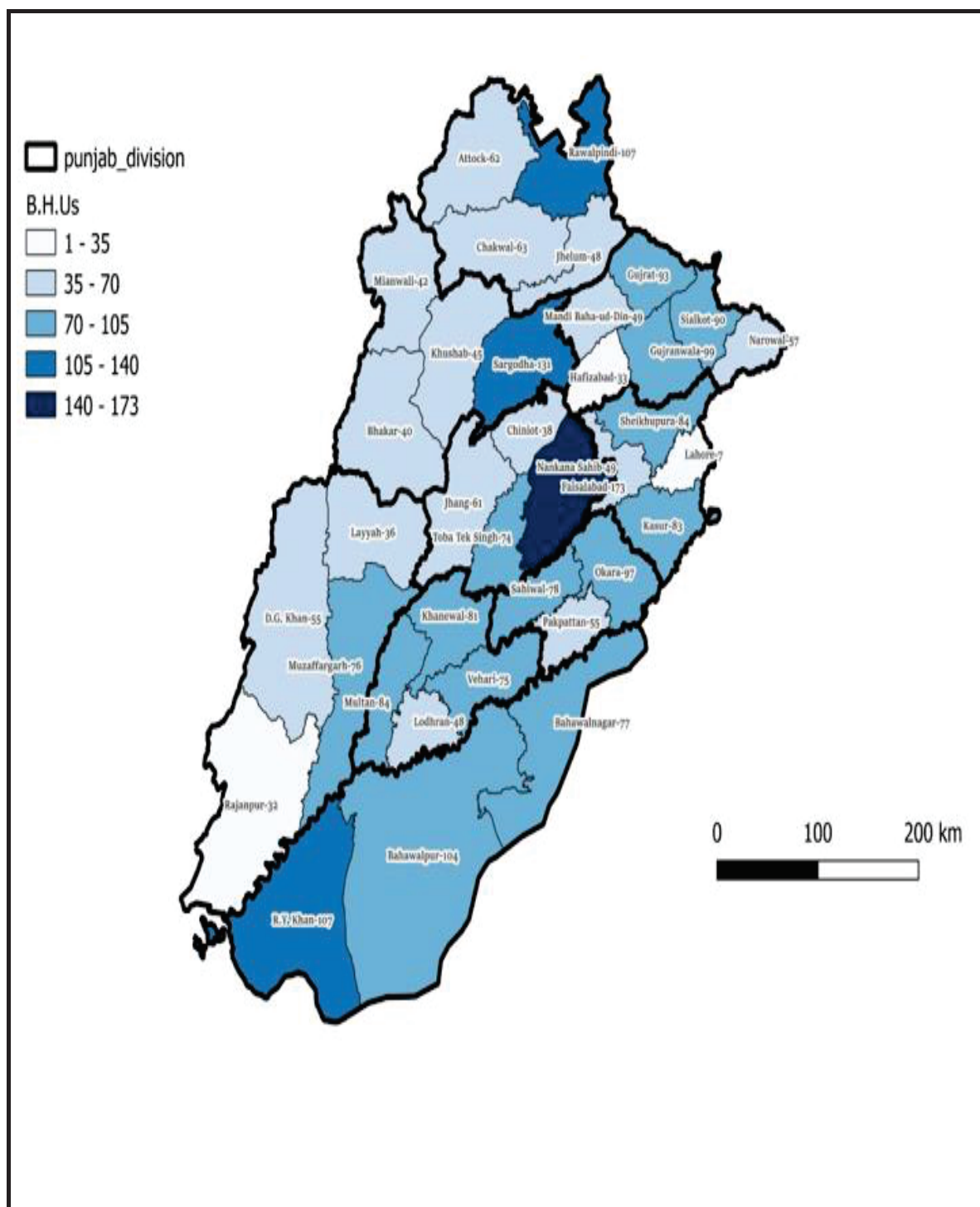
Figure 5: Total Number of R.H.Cs by District, The Punjab: As on 01-01-2023



Source:- i) Health Department, Government of the Punjab
 iii) Auqaf Department, Government of the Punjab
 v) Punjab Employee's Social Security Institutions

ii) Home Department (I.G. Prisons)
 iv) Pakistan Railways.
 vi) Director General Medical Services, WAPDA

Figure 6: Total Number of B.H.U.s by District, The Punjab: As on 01-01-2023



Source:- i) Health Department, Government of the Punjab
 iii) Auqaf Department, Government of the Punjab
 v) Punjab Employee's Social Security Institutions

ii) Home Department (I.G. Prisons)
 iv) Pakistan Railways.
 vi) Director General Medical Services, WAPDA

Table 4:- Hospitals by Division and District, The Punjab: As on 01-01-2023

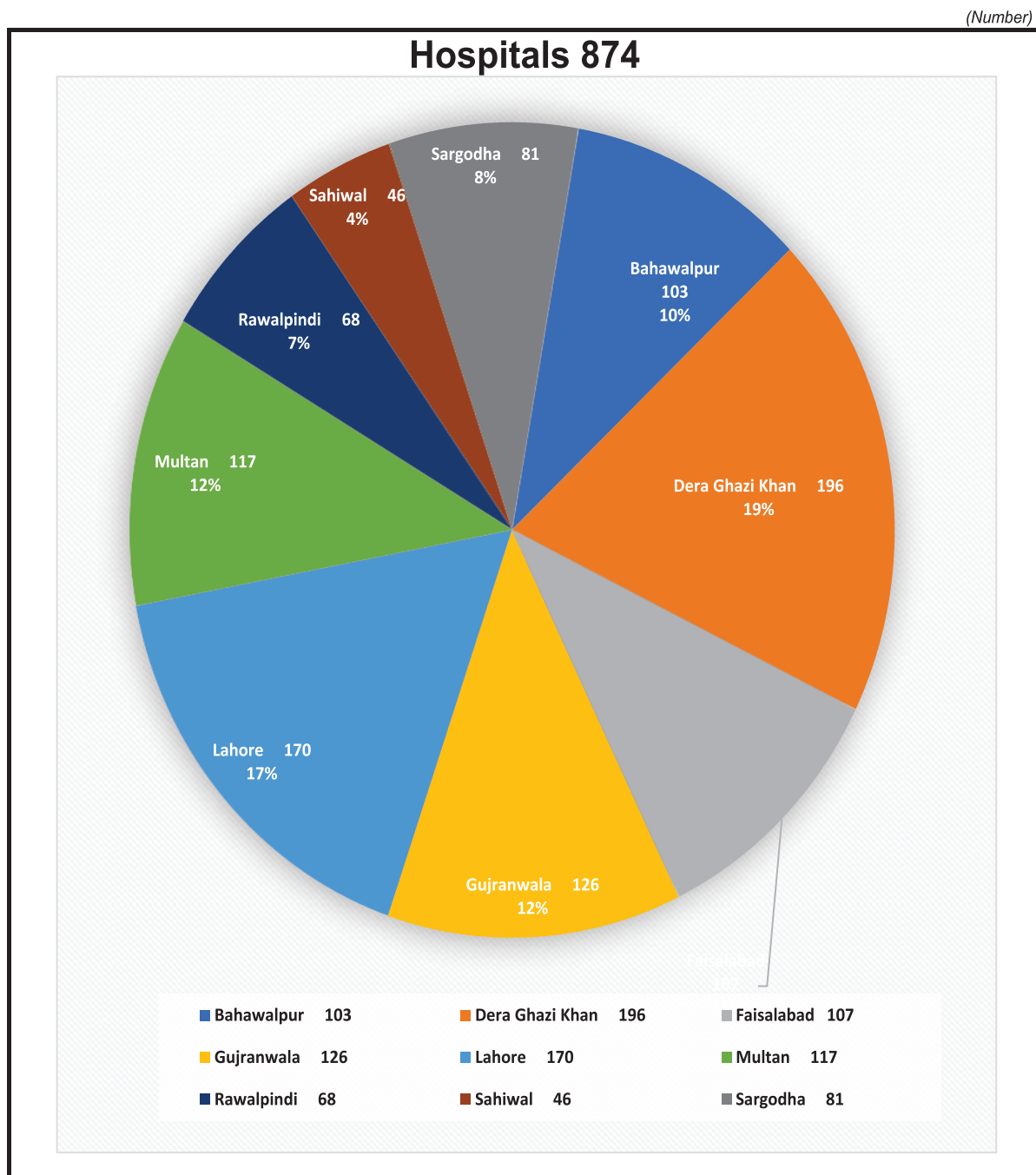
(Number)

Division/ District	Hospitals		Population (Census 2017)	Population Per	
	No.	Beds		Hospitals	Beds
The Punjab	874	71334	110264125	126160	1546
Bahawalpur Division	103	6103	11464031	111301	1878
Bahawalnagar	20	1087	2981919	149096	2743
Bahawalpur	39	3017	3668106	94054	1216
R.Y.Khan	44	1999	4814006	109409	2408
D.G.Khan Division	56	3650	11264532	201152	3086
D.G.Khan	16	1356	3084631	192789	2275
Layyah	12	718	1824230	152019	2541
Muzaffargarh	19	1033	4325483	227657	4187
Rajanpur	9	543	2030188	225576	3739
Faisalabad Division	107	7124	14178630	132511	1990
Chiniot	6	264	1369740	228290	5188
Faisalabad	50	4645	7874790	157496	1695
Jhang	27	1003	2744085	101633	2736
T. T. Singh	24	1212	2190015	91251	1807
Gujranwala Division	126	6106	16123984	127968	2641
Gujranwala	30	1857	5014196	167140	2700
Gujrat	25	730	2756110	110244	3775
Hafizabad	5	455	1156957	231391	2543
M. B. Din	18	663	1593292	88516	2403
Narowal	15	680	1709757	113984	2514
Sialkot	33	1721	3893672	117990	2262
Lahore Division	170	28945	19398081	114106	670
Kasur	25	1048	3454996	138200	3297
Lahore	114	25847	11126285	97599	430
Nankana Sahib	5	338	1356374	271275	4013
Sheikhupura	26	1712	3460426	133093	2021
Multan Division	117	6116	12265161	104830	2005
Khanewal	36	1156	2921986	81166	2528
Lodhran	10	456	1700620	170062	3729
Multan	58	3715	4745109	81812	1277
Vehari	13	789	2897446	222880	3672
Rawalpindi Division	68	6565	10007821	147174	1524
Attock	13	652	1883556	144889	2889
Chakwal	10	443	1495982	149598	3377
Jhelum	12	506	1222650	101888	2416
Rawalpindi	33	4964	5405633	163807	1089
Sahiwal Division	46	2493	7380386	160443	2960
Okara	19	891	2517560	132503	2826
Pakpattan	10	406	1374912	137491	3386
Sahiwal	17	1196	1823687	107276	1525
Sargodha Division	81	4232	8181499	101006	1933
Bhakkar	16	871	1650518	103157	1895
Khushab	14	563	1281299	91521	2276
Mianwali	16	1039	1546094	96631	1488
Sargodha	35	1759	3703588	105817	2106

Source:- i) Health Department, Government of the Punjab
 iii) Aqaf Department, Government of the Punjab
 v) Punjab Employee's Social Security Institutions
 vi) Punjab Health Care Commission

ii) Home Department (I.G. Prisons)
 iv) Pakistan Railways.
 vi) Director General Medical Services, WAPDA

Figure 7: Total Number of Hospitals by Division, The Punjab: As on 01-01-2023



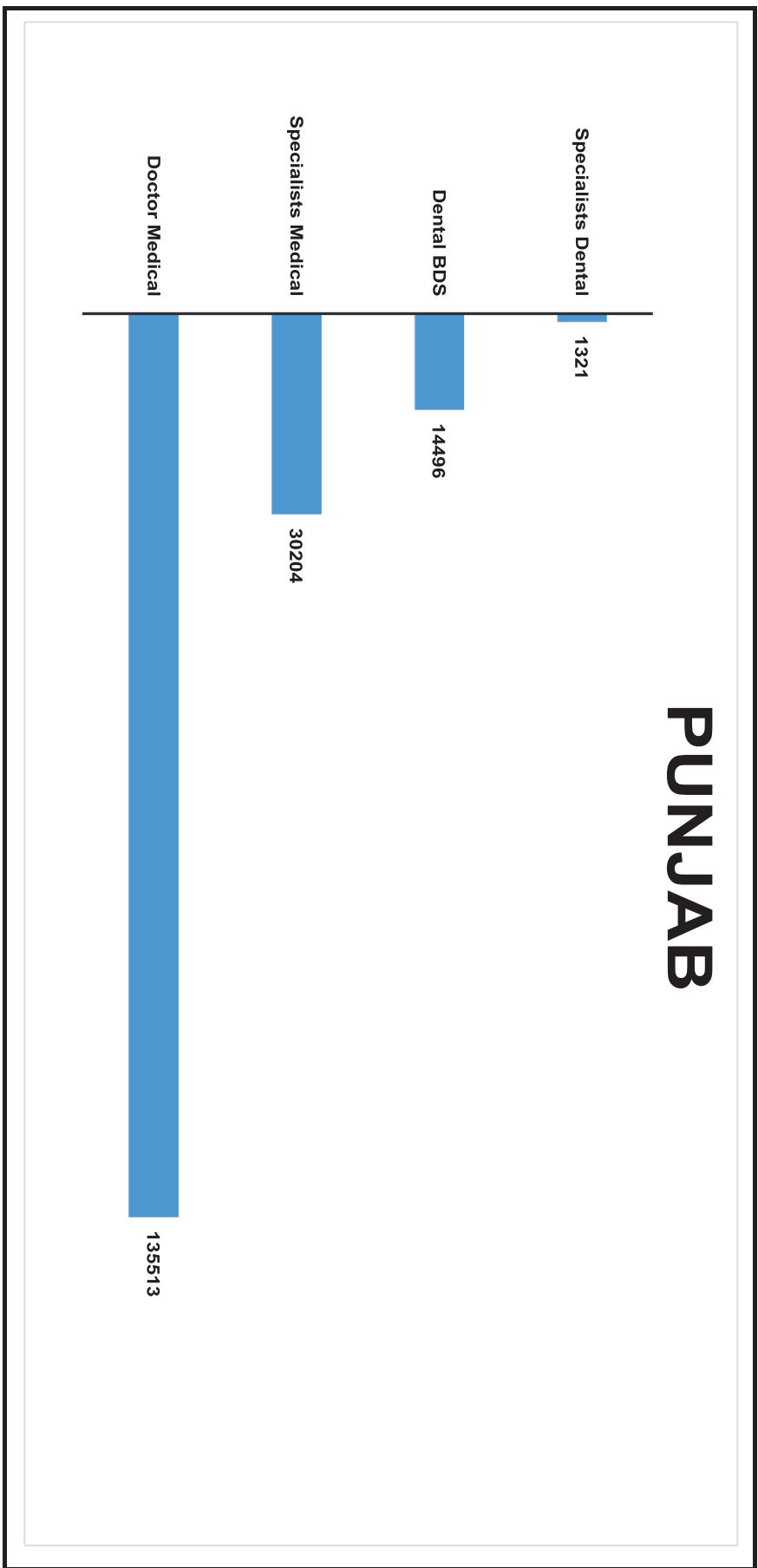
Source:- i) Health Department, Government ii) Home Department (I.G. Prisons)
 iii) Auqaf Department, Government iv) Pakistan Railways.
 v) Punjab Employee's Social Secur. vi) Director General Medical Services, WAPDA
 vii) Punjab Health Care Commission

Table 5:- Registered Medical Personnel By Gender As On 01.01. 2023

Province	Doctors (MBBS)			Dentists (BDS)			Specialists					
	Total	Male	Female	Total	Male	Female	Medical			Dental		
							Total	Male	Female	Total	Male	Female
Total	285917	135093	150824	34378	22939	11439	58686	21551	37135	2934	1260	1674
Punjab	135513	66967	68546	14496	9953	4543	30204	11811	18393	1321	599	722
Sindh	90869	47360	43509	12057	8751	3306	16258	6503	9755	834	372	462
KPK	39460	12873	26587	5711	3252	2459	8726	2210	6516	631	248	383
Balochistan	8177	3204	4973	884	455	429	1894	519	1375	79	21	58
AJK	7183	3396	3787	611	364	247	1446	475	971	61	19	42
Foreign Nationals	4715	1293	3422	619	164	455	158	33	125	8	1	7

Source : - Pakistan Medical & Dental Council (PMDC), Islamabad

Figure 8: Registered Medical Personnel in Punjab: As on 01-01-2023



Source:- Pakistan Medical Commission (PMC), Islamabad

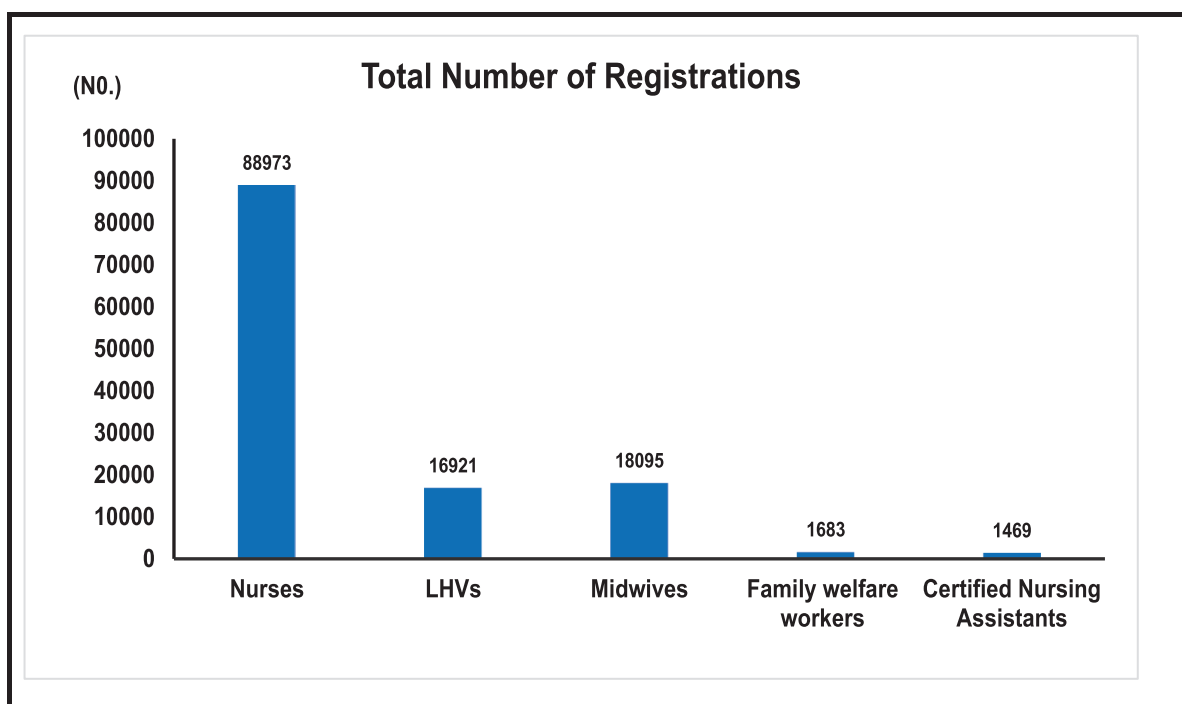
**Table 6:- Registered Nurses, LHV's, Midwives, & Naib/Dais, The Punjab:
As on 01-01-2023**

As on 1st Jan, Year	Nurses	LHV's	Midwives	Naib/Dais *	(Progressive Number)	
					Family welfare workers	Certified Nursing Assistants
2014	58324	11788	8520	527	-	-
2015	60533	12297	8100	947	-	-
2016	63251	13087	8702	1447	-	-
2017	65669	13595	9609	2343	-	-
2018	68262	14355	10904	2754	-	-
2019	79925	14496	11589	3273	-	-
2020	81816	14704	15981	3382	-	-
2021	83760	15286	16636	3460	-	-
2022	86086	15907	17599	3460	-	-
2023	88973	16921	18095	-	1683	1469

Source:- Pakistan Nursing And Midwifery Council (PN&MC), Islamabad

* Naib/Dais jobs has been abolished

Figure 9: Registered Nurses, LHV's, The Punjab: As on 01-01-2023



Source:- Pakistan Nursing Council (PNC), Islamabad

Table 7:- Health Facilities Per Million Population, The Punjab: As on 01-01-2023

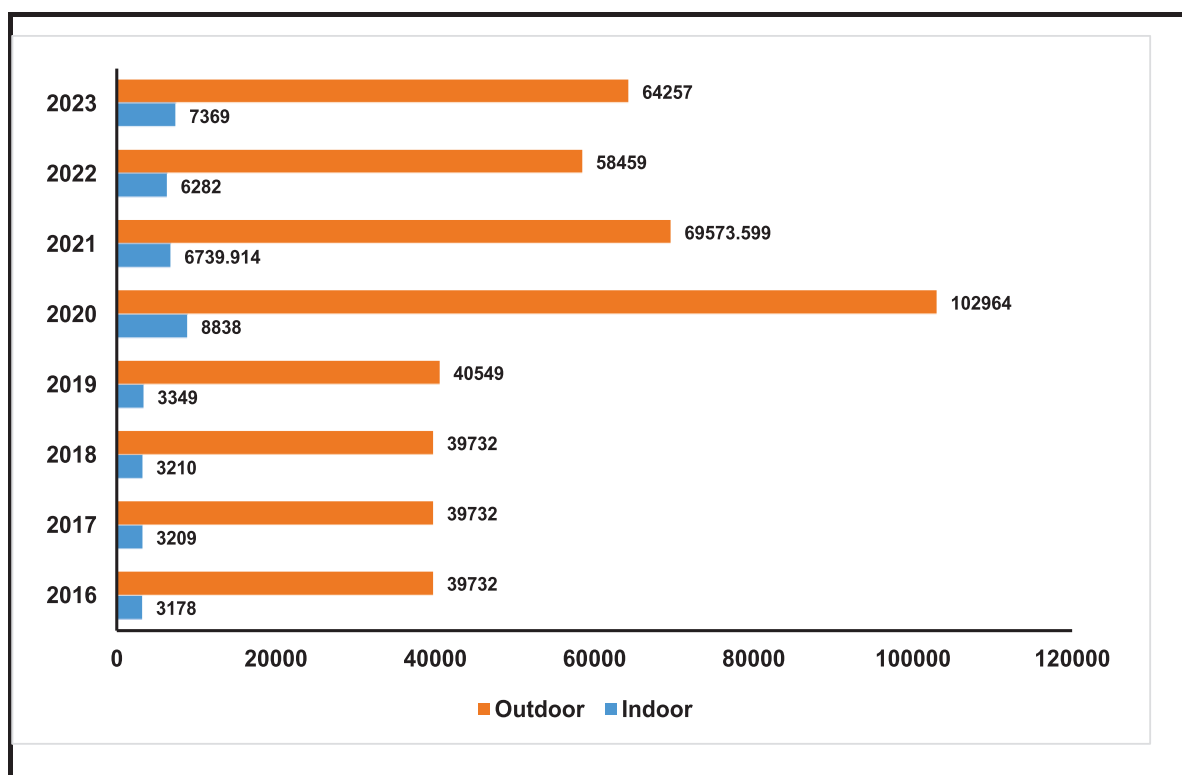
As on 1st Jan, Year	No. of Hospitals & Dispensaries	No. of Beds in Hospitals & Dispensaries	Progressive Number Per Million Population			Per Million Population					
			Doctors	Dentists	Nurses	Population (Million Persons)	Hospitals & Dispensaries	Beds in Hospitals & Dispensaries	Doctors	Dentists	Nurses
2014	1688	46042	59162	5792	58324	100	17	461	593	58	584
2015	1693	46400	62839	6359	60533	101	17	458	620	63	597
2016	1700	46579	67372	7135	63251	103	17	452	654	69	614
2017	1663	48492	67372	7135	65669	103	16	471	654	69	637
2018	1674	48714	72826	9632	68262	110	15	443	662	88	620
2019	1567	49183	83829	9736	69947	110	14	447	762	88	636
2020	1801	59663	87121	10010	81816	110	16	542	792	91	744
2021	1802	59871	120964	11088	83760	110	16	544	1099	101	761
2022	1538	61443	126812	13246	86086	110	14	559	1153	120	783
2023	2059	71427	135513	14496	88973	110	19	649	1232	132	809

Source:- i) Pakistan Medical Commission (PMC), Islamabad
ii) Population Census Wing, Pakistan Bureau of Statistics, Islamabad
ii) Pakistan Nursing Council (PNC), Islamabad

Table 8:- Patients Treated by Various Health Institutions, The Punjab: As on 01-01-2023

(Thousand Number)

As on 1st Jan, Year	Total	Hospitals			Dispensaries	Other Health Centers ¹
		Total	Indoor	Out-door		
2014	93962	37356	2351	35005	10312	46294
2015	100718	42960	3154	39806	7235	50523
2016	106406	42910	3178	39732	8369	55127
2017	103589	42941	3209	39732	7611	53037
2018	103590	42942	3210	39732	7611	53037
2019	106192	43898	3349	40549	7751	54543
2020	178164	111802	8838	102964	8350	58012
2021	138184	76314	6740	69574	7059	54811
2022	130748	64741	6282	58459	6984	59023
2023	138465	71626	7369	64257	7453	59386

Figure 10: Patients Treated by Various Health Institutions, The Punjab: As on 01-01-2023

¹Other Health Centers include R.H.Cs, B.H.U.s, T.B. Clinics, S.H.Cs, M.C.H Centers and Trauma Centers Patients Treated

Source:- i) Health Department, Government of the Punjab

iii) Auqaf Department, Government of the Punjab

v) Punjab Employee's Social Security Institutions

ii) Home Department (I.G. Prisons)

iv) Pakistan Railways.

vi) Director General Medical Services, WAPDA

Figure 11: Population Per Hospital by Division, The Punjab: As on 01-01-2023

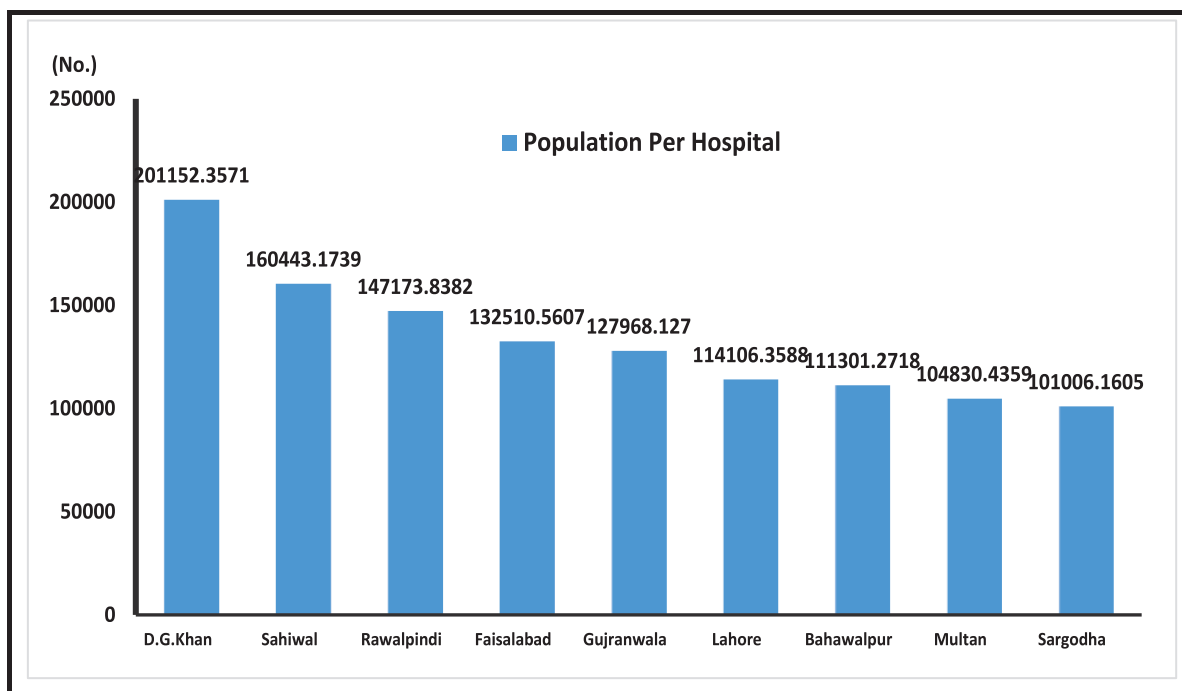
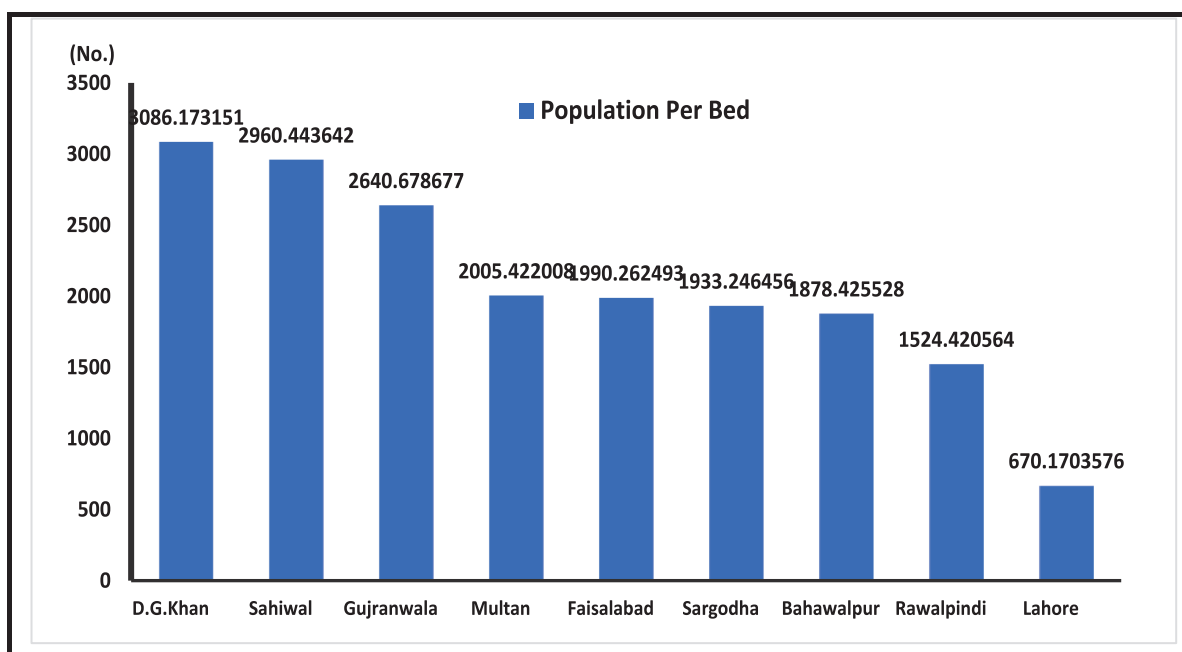


Figure 12: Population Per Bed of the Hospitals by Division, The Punjab: As on 01-01-2023



Source:- i) Health Department, Government of the Punjab
 iii) Aqaf Department, Government of the Punjab
 v) Punjab Employee's Social Security Institutions
 vi) Punjab Health Care Commission

ii) Home Department (I.G. Prisons)
 iv) Pakistan Railways.
 vi) Director General Medical Services, WAPDA

Table 9:- Dispensaries by Division, District, Tehsil and Population, The Punjab:
As on 01-01-2023 - Contd.

Division/ District/ Tehsil	No. of Dispensaries	Population (Census 2017)	Population Per Dispensary
The Punjab	1185	110264125	93050
Bahawalpur Division	164	11464031	69903
Bahawalnagar District	29	2981919	102825
Bahawalnagar	9	815143	90571
Chishtian	3	691221	230407
Fort Abbas	4	423529	105882
Haroonabad	7	525598	75085
Minchinabad	6	526428	87738
Bahawalpur District	70	3668106	52402
Ahmadpur East	22	1078683	49031
Bahawalpur City	8	681696	85212
Bahawalpur Sadar	15	574950	38330
Hasilpur	10	456006	45601
Khairpur Tamewali	1	262628	262628
Yazman	14	614143	43867
R.Y.Khan District	65	4814006	74062
Khanpur	18	983415	54634
Liaquatpur	17	1035509	60912
R. Y. Khan	15	1530330	102022
Sadiqabad	15	1264752	84317
D.G.Khan Division	115	11264532	97952
D.G.Khan District	23	3084631	134114
D. G. Khan	8	1439042	179880
Kot Chutta	10	757403	75740
Taunsa Sharif	2	675756	337878
Tribal Area	3	212430	70810
Layyah District	34	1824230	53654
Layyah	8	977391	122174
Karor	16	594639	37165
Choubara	10	252200	25220
Muzaffargarh District	45	4325483	96122
Muzaffargarh	5	1624472	324894
Kotadu	5	1346687	269337
Alipur	11	639748	58159
Jatoi	24	714576	29774
Rajanpur District	13	2030188	156168
Jampur	8	849086	106136
Rajanpur	5	775328	155066
Rojhan	-	405774	-

Source:- i) Population Census 2017, Pakistan Bureau of Statistics, Government of Pakistan, Islamabad.

ii) Health Department, Government of the Punjab

Table 9:- Dispensaries by Division, District, Tehsil and Population, The Punjab:
As on 01-01-2023 - Contd.

Division/ District/ Tehsil	No. of Dispensaries	Population (Census 2017)	Population Per Dispensary
Faisalabad Division	232	14178630	61115
Chiniot District	12	1369740	114145
Chiniot	1	556147	556147
Bhowana	6	374270	62378
Lalian	5	439323	87865
Faisalabad District	116	7874790	67886
Chak Jhumra	7	332461	47494
Jaranwala	41	1492276	36397
Tandlianwala	24	702733	29281
Sammundri	20	643068	32153
Faisalabad Sadar	16	1465411	91588
Faisalabad City	8	3238841	404855
Jhang District	75	2744085	36588
Jhang	12	1466141	122178
Shorkot	10	548626	54863
18 hazari	43	295801	6879
Ahmadpur Sial	10	433517	43352
T. T. Singh District	29	2190015	75518
T.T. Singh	6	739826	123304
Gojra	6	656007	109335
Kamalia	7	371851	53122
Pir Mahal	10	422331	42233
Gujranwala Division	124	16123984	130032
Gujranwala District	59	5014196	84986
Gujranwala	29	3066610	105745
Kamoke	10	581444	58144
Noshehra Virkan	5	535746	107149
Wazirabad	15	830396	55360
Gujrat District	6	2756110	459352
Gujrat	5	1497865	299573
Kharian	1	1010912	1010912
Sarai Alamgir	-	247333	-
Hafizabad District	16	1156957	72310
Hafizabad	11	663735	60340
Pindi Bhattian	5	493222	98644
M. B. Din District	8	1593292	199162
Mandi Bahauddin	2	668007	334004
Phalia	1	553416	553416
Malakwal	5	371869	74374

Source:- i) Population Census 2017, Pakistan Bureau of Statistics, Government of Pakistan, Islamabad.

ii) Health Department, Government of the Punjab

Table 9:- Dispensaries by Division, District, Tehsil and Population, The Punjab:
As on 01-01-2023 - Contd.

Division/ District/ Tehsil	No. of Dispensaries	Population (Census 2017)	Population Per Dispensary
Narowal District	8	1709757	213720
Narowal	4	596565	149141
Shakargarh	3	674223	224741
Zafarwal	1	438969	438969
Sialkot District	27	3893672	144210
Sialkot	4	1794658	448665
Sambrial	7	411200	58743
Daska	4	846933	211733
Pasrur	12	840881	70073
Lahore Division	198	19398081	97970
Kasur District	32	3454996	107969
Chunian	8	825684	103211
Kasur	11	1334653	121332
Kot Rahadha Kishan	4	360330	90083
Pattoki	9	934329	103814
Lahore District	118	11126285	94291
Lahore Cantt	71	1636342	23047
Lahore City	10	3655774	365577
Model Town	7	2698235	385462
Raiwind	11	855626	77784
Shalamar	19	2280308	120016
Nankana Sahib District	23	1356374	58973
Nankana	12	883876	73656
Shahkot	7	244868	34981
Sangla Hill	4	227630	56908
Sheikhupura District	25	3460426	138417
Sheikhupura	1	1555424	1555424
Muridke	2	639784	319892
Ferozewala	-	795498	-
Safdarabad	-	272500	-
Sharaqpur	22	197220	8965
Multan Division	112	12265161	109510
Khanewal District	11	2921986	265635
Khanewal	2	856793	428397
Mian Channu	3	761971	253990
Kabirwala	2	959861	479931
Jahanian	4	343361	85840

Source:- i) Population Census 2017, Pakistan Bureau of Statistics, Government of Pakistan, Islamabad.

ii) Health Department, Government of the Punjab

Table 9:- Dispensaries by Division, District, Tehsil and Population, The Punjab:
As on 01-01-2023 - Contd.

Division/ District/ Tehsil	No. of Dispensaries	Population (Census 2017)	Population Per Dispensary
Lodhran District	17	1700620	100036
Dunyapur	7	495013	70716
Karor Pacca	3	500939	166980
Lodhran	7	704668	100667
Multan District	47	4745109	100960
Jalalpur Pirwala	8	554152	69269
Multan City	24	2258570	94107
Multan Sadar	9	1322756	146973
Shujabad	6	609631	101605
Vehari District	37	2897446	78309
Vehari	10	928166	92817
Mailsi	12	953895	79491
Burewala	15	1015385	67692
Rawalpindi Division	75	10007821	133438
Attock District	9	1883556	209284
Attock	4	434705	108676
Fatehjang	1	325970	325970
Hassanabdal	-	216566	-
Hazro	1	339238	339238
Jand	2	295483	147742
Pindigheb	1	271594	271594
Chakwal District	18	1495982	83110
Chakwal	11	656978	59725
Choa Saidan Shah	3	141844	47281
Kalar Kahar	2	169660	84830
Lawa	1	125893	125893
Talagang	1	401607	401607
Jhelum District	26	1222650	47025
Dina	2	238660	119330
Jhelum	6	445190	74198
PD Khan	11	336852	30623
Sohawa	7	201948	28850
Rawalpindi District	22	5405633	245711
Gujar Khan	3	678503	226168
Kahuta	-	220576	-
Kallar Syedan	1	217273	217273
Kotli Sattian	-	119312	-
Murree	3	233471	77824
Rawalpindi	15	3258547	217236
Texila	-	677951	-

Source:- i) Population Census 2017, Pakistan Bureau of Statistics, Government of Pakistan, Islamabad.

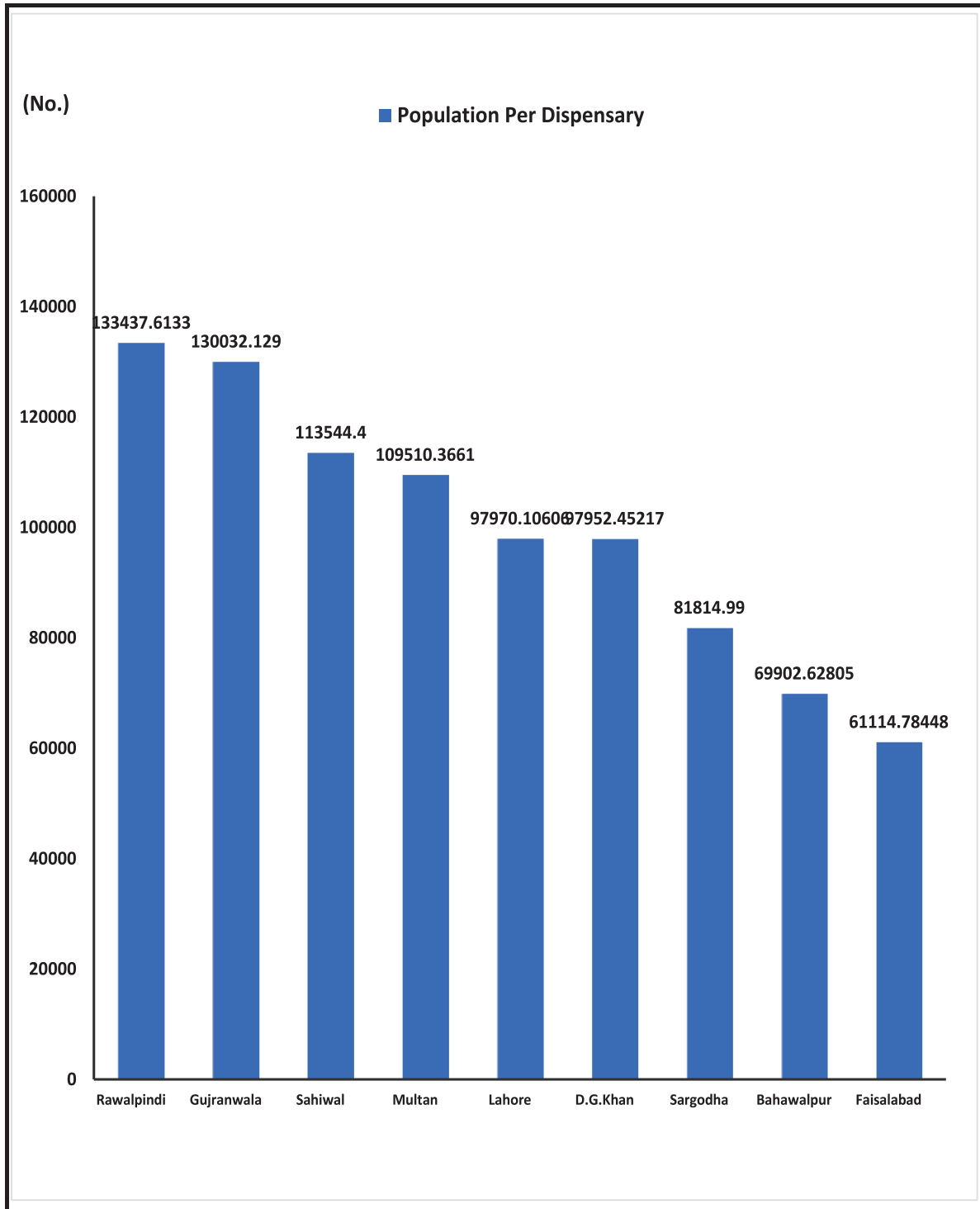
ii) Health Department, Government of the Punjab

Table 9:- Dispensaries by Division, District, Tehsil and Population, The Punjab:
As on 01-01-2023 - Contd.

Division/ District/ Tehsil	No. of Dispensaries	Population (Census 2017)	Population Per Dispensary
Sahiwal Division	65	7380386	113544
Okara District	29	3039139	104798
Depalpur	9	1374912	152768
Okara	13	1205655	92743
Renala Khurd	7	458572	65510
Pakpattan District	10	1823687	182369
Arifwala	-	854462	-
Pakpattan	10	969225	96923
Sahiwal District	26	2517560	96829
Chichawatni	9	1026007	114001
Sahiwal	17	1491553	87738
Sargodha Division	100	8181499	81815
Bhakkar District	30	1650518	55017
Bhakkar	13	685059	52697
Darya Khan	6	360807	60135
Kalur Kot	5	347552	69510
Mankera	6	257100	42850
Khushab District	38	1281299	33718
Khushab	13	689742	53057
Nurpur	2	243295	121648
Naushera	15	117942	7863
Qaidabad	8	230320	28790
Mianwali District	20	1546094	77305
Isa Khel	2	375026	187513
Mianwali	11	767130	69739
Piplan	7	403938	57705
Sargodha District	12	3703588	308632
Bhalwal	1	357331	357331
Bhera	1	315148	315148
Kot Momin	2	453562	226781
Sahiwal	-	341247	-
Sargodha	4	1537866	384467
Shahpur	3	353969	117990
Sillanwali	1	344465	344465

Source:- i) Population Census 2017, Pakistan Bureau of Statistics, Government of Pakistan, Islamabad.
 ii) Health Department, Government of the Punjab

Figure 13: Population Per Dispensary by Division, The Punjab: As on 01-01-2023



Source:- i) Population Census Wing, Pakistan Bureau of Statistics, Government of Pakistan, Islamabad.
 ii) D.G Health Service, Punjab

**Table 10 : RHC & their Bed Strength by Division, District, Tehsil, and Population,
The Punjab: As on 01-01-2023**

(Number)

Division/ District/ Tehsil	No. of Units		Population (Census 2017)	Population Per	
	RHC	Beds		RHC	Beds
The Punjab	374	6536	110264125	294824	16870
Bahawalpur Division	45	816	11464031	254756	14049
Bahawalpur District	10	200	3668106	366811	18341
Ahmadpur East	2	40	1078683	539342	26967
Bahawalpur City	2	40	681696	340848	17042
Bahawalpur Sadar	1	20	574950	574950	28748
Hasilpur	3	60	456006	152002	7600
Khairpur Tamewali	2	40	262628	131314	6566
Yazman	13	240	614143	47242	2559
Bahawalnagar District	4	80	2981919	745480	37274
Bahawalnagar	1	-	815143	815143	-
Chishtian	3	60	691221	230407	11520
Fort Abbas	2	40	423529	211765	10588
Haroonabad	-	-	525598	-	-
Minchinabad	3	60	526428	175476	8774
R.Y.Khan District	22	376	4814006	218818	12803
Khanpur	4	68	983415	245854	14462
Liaquatpur	6	88	1035509	172585	11767
R. Y. Khan	6	100	1530330	255055	15303
Sadiqabad	6	120	1264752	210792	10540
D.G.Khan Division	37	705	11264532	304447	15978
D.G.Khan District	10	180	3084631	308463	17137
D. G. Khan	5	80	1439042	287808	17988
Kot Chutta	1	20	212430	212430	10622
Taunsa Sharif	2	40	757403	378702	18935
Tribal Area	2	40	675756	337878	16894
Layyah District	6	120	1824230	304038	15202
Choubara	-	-	252200	-	-
Karor	1	20	594639	594639	29732
Layyah	5	100	977391	195478	9774
Muzaffargarh District	14	260	4325483	308963	16636
Alipur	2	40	639748	319874	15994
Jatoi	1	20	714576	714576	35729
Kotadu	3	60	1346687	448896	22445
Muzaffargarh	8	140	1624472	203059	11603
Rajanpur District	7	145	2030188	290027	14001
Jampur	4	80	849086	212272	10614
Rajanpur	2	45	775328	387664	17230
Rojhan	1	20	405774	405774	20289

Source:- i) Population Census Wing, Pakistan Bureau of Statistics, Government of Pakistan, Islamabad .
ii) D.G Health Service, Punjab

**Table 10 : RHC & their Bed Strength by Division, District, Tehsil, and Population,
The Punjab: As on 01-01-2023 -Contd.**

(Number)

Division/ District/ Tehsil	No. of Units		Population (Census 2017)	Population Per	
	RHC	Beds		RHC	Beds
Faisalabad Division	42	738	14178630	337586	19212
Chiniot District	3	18	1369740	456580	76097
Bhowana	-	-	374270	-	-
Chiniot	1	6	556147	556147	92691
Lalian	2	12	439323	219662	36610
Faisalabad District	21	340	7874790	374990	23161
Chak Jhumra	2	20	332461	166231	16623
Faisalabad City	3	-	3238841	1079614	-
Faisalabad Sadar	2	40	1465411	732706	36635
Jaranwala	6	120	1492276	248713	12436
Sammundri	4	80	643068	160767	8038
Tandlianwala	4	80	702733	175683	8784
Jhang District	10	220	2744085	274409	12473
Ahmadpur Sial	2	40	433517	216759	10838
Jhang	1	20	1466141	1466141	73307
Shorkot	5	120	548626	109725	4572
18 hazari	2	40	295801	147901	7395
T. T. Singh District	8	160	2190015	273752	13688
Gojra	2	40	656007	328004	16400
Kamalia	1	20	371851	371851	18593
Pir Mahal	2	40	422331	211166	10558
T.T. Singh	3	60	739826	246609	12330
Gujranwala Division	59	1040	16123984	273288	15504
Gujranwala District	14	240	5014196	358157	20892
Gujranwala	3	60	3066610	1022203	51110
Kamoke	2	20	581444	290722	29072
Noshehra Virkan	1	20	535746	535746	26787
Wazirabad	8	140	830396	103800	5931
Gujrat District	10	180	2756110	275611	15312
Gujrat	5	80	1497865	299573	18723
Kharian	4	80	1010912	252728	12636
Sarai Alamgir	1	20	247333	247333	12367
Hafizabad District	8	140	1156957	144620	8264
Hafizabad	5	80	663735	132747	8297
Pindi Bhattian	3	60	493222	164407	8220
M. B. Din District	11	200	1593292	144845	7966
Malakwal	3	60	371869	123956	6198
Mandi Bahauddin	5	80	668007	133601	8350
Phalia	3	60	553416	184472	9224

Source:- i) Population Census Wing, Pakistan Bureau of Statistics, Government of Pakistan, Islamabad .
ii) D.G Health Service, Punjab

**Table 10 : RHC & their Bed Strength by Division, District, Tehsil, and Population,
The Punjab: As on 01-01-2023 -Contd.**

(Number)

Division/ District/ Tehsil	No. of Units		Population (Census 2017)	Population Per	
	RHC	Beds		RHC	Beds
Narowal District	7	140	1709757	244251	12213
Narowal	2	40	596565	298283	14914
Shakargarh	2	40	674223	337112	16856
Zafarwal	3	60	438969	146323	7316
Sialkot District	9	140	3893672	432630	27812
Daska	3	40	846933	282311	21173
Pasrur	2	40	840881	420441	21022
Sialkot	2	40	411200	205600	10280
Sambrial	2	20	1794658	897329	89733
Lahore Division	56	800	19398081	346394	24248
Lahore District	13	220	11126285	855868	50574
Lahore Cantt	4	60	1636342	409086	27272
Lahore City	6	100	3655774	609296	36558
Model Town	-	-	2698235	-	-
Raiwind	3	60	855626	285209	14260
Shalamar	25	272	2280308	91212	8383
Kasur District	15	80	3454996	230333	43187
Chunian	6	120	825684	137614	6881
Kasur	1	15	1334653	1334653	88977
Kot Rahadha Kishan	1	17	360330	360330	21196
Pattoki	2	40	934329	467165	23358
Nankana Sahib District	9	168	1356374	150708	8074
Nankana	7	144	883876	126268	6138
Shahkot	-	-	227630	-	-
Sangla Hill	2	24	244868	122434	10203
Sheikhupura District	9	140	3460426	384492	24717
Ferozewala	1	20	795498	795498	39775
Muridke	2	20	639784	319892	31989
Safdarabad	1	20	272500	272500	13625
Sharaqpur	-	-	197220	-	-
Sheikhupura	5	80	1555424	311085	19443
Multan Division	37	700	12265161	331491	17522
Multan District	8	160	4745109	593139	29657
Jalalpur Pirwala	1	20	554152	554152	27708
Multan City	-	-	2258570	-	-
Multan Sadar	5	100	1322756	264551	13228
Shujabad	2	40	609631	304816	15241

Source:- i) Population Census Wing, Pakistan Bureau of Statistics, Government of Pakistan, Islamabad .
ii) D.G Health Service, Punjab

**Table 10 : RHC & their Bed Strength by Division, District, Tehsil, and Population,
The Punjab: As on 01-01-2023 -Contd.**

(Number)

Division/ District/ Tehsil	No. of Units		Population (Census 2017)	Population Per	
	RHC	Beds		RHC	Beds
Khanewal District	10	180	2921986	292199	16233
Mian Channu	1	20	343361	343361	17168
Kabirwala	5	100	959861	191972	9599
Khanewal	2	40	856793	428397	21420
Jahanian	2	20	761971	380986	38099
Lodhran District	5	80	1700620	340124	21258
Dunyapur	2	40	495013	247507	12375
Karor Pacca	-	-	500939	-	-
Lodhran	3	40	704668	234889	17617
Vehari District	14	280	2897446	206960	10348
Burewala	3	60	1015385	338462	16923
Mailsi	4	80	953895	238474	11924
Vehari	7	140	928166	132595	6630
Rawalpindi Division	37	581	10007821	270482	17225
Rawalpindi District	8	141	5405633	675704	38338
Gujar Khan	3	50	678503	226168	13570
Kahuta	-	-	220576	-	-
Kallar Syedan	-	-	217273	-	-
Kotli Sattian	1	20	119312	119312	5966
Murree	1	20	233471	233471	11674
Rawalpindi	3	51	3258547	1086182	63893
Taxila	-	-	677951	-	-
Attock District	6	110	1883556	313926	17123
Attock	-	-	434705	-	-
Fatehjang	1	20	325970	325970	16299
Hassanabdal	-	-	216566	-	-
Hazro	2	30	339238	169619	11308
Jand	2	40	295483	147742	7387
Pindigheb	1	20	271594	271594	13580
Chakwal District	16	210	1495982	93499	7124
Chakwal	10	90	656978	65698	7300
Choa Saidan Shah	1	20	141844	141844	7092
Kalar Kahar	1	20	169660	169660	8483
Lawa	-	-	125893	-	-
Talagang	4	80	401607	100402	5020
Jhelum District	7	120	1222650	174664	10189
Dina	1	20	238660	238660	11933
Jhelum	2	20	445190	222595	22260
PD Khan	3	60	336852	112284	5614
Sohawa	1	20	201948	201948	10097

Source:- i) Population Census Wing, Pakistan Bureau of Statistics, Government of Pakistan, Islamabad .
ii) D.G Health Service, Punjab

**Table 10 : RHC & their Bed Strength by Division, District, Tehsil, and Population,
The Punjab: As on 01-01-2023 -Contd.**

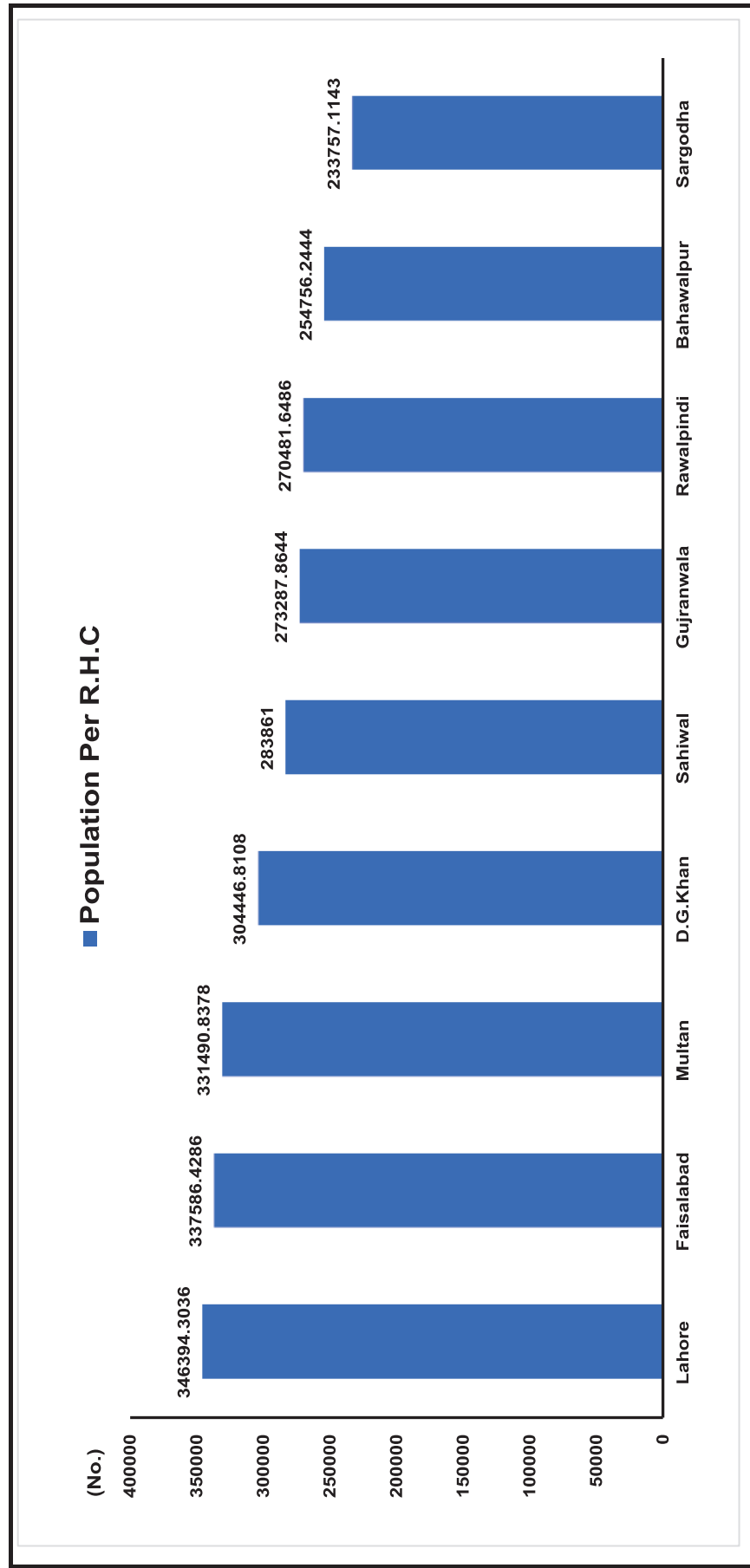
(Number)

Division/ District/ Tehsil	No. of Units		Population (Census 2017)	Population Per	
	RHC	Beds		RHC	Beds
Sahiwal Division	26	520	7380386	283861	14193
Sahiwal District	11	220	2517560	228869	11443
Chichawatni	5	100	1026007	205201	10260
Sahiwal	6	120	1491553	248592	12430
Okara District	10	200	3039139	303914	15196
Depalpur	6	120	1374912	229152	11458
Okara	2	40	1205655	602828	30141
Renala Khurd	2	40	458572	229286	11464
Pakpattan District	5	100	1823687	364737	18237
Arifwala	2	40	854462	427231	21362
Pakpattan	3	60	969225	323075	16154
Sargodha Division	35	636	8181499	233757	12864
Sargodha District	13	240	3703588	284891	15432
Bhalwal	1	20	357331	357331	17867
Bhera	5	100	315148	63030	3151
Kot Momin	1	20	453562	453562	22678
Sahiwal	3	60	341247	113749	5687
Sargodha	1	20	1537866	1537866	76893
Shahpur	-	-	353969	-	-
Sillanwali	1	20	344465	344465	17223
Bhakkar District	6	112	1650518	275086	14737
Bhakkar	2	40	685059	342530	17126
Darya Khan	2	20	360807	180404	18040
Kalur Kot	1	32	347552	347552	10861
Mankera	1	20	257100	257100	12855
Khushab District	6	60	1281299	213550	21355
Khushab	4	48	689742	172436	14370
Nurpur	1	12	243295	243295	20275
Naushera	1	-	117942	117942	-
Qaidabad	-	-	230320	-	-
Mianwali District	10	224	1546094	154609	6902
Isa Khel	3	84	375026	125009	4465
Mianwali	5	100	767130	153426	7671
Piplan	2	40	403938	201969	10098

Source:- i) Population Census Wing, Pakistan Bureau of Statistics, Government of Pakistan, Islamabad .

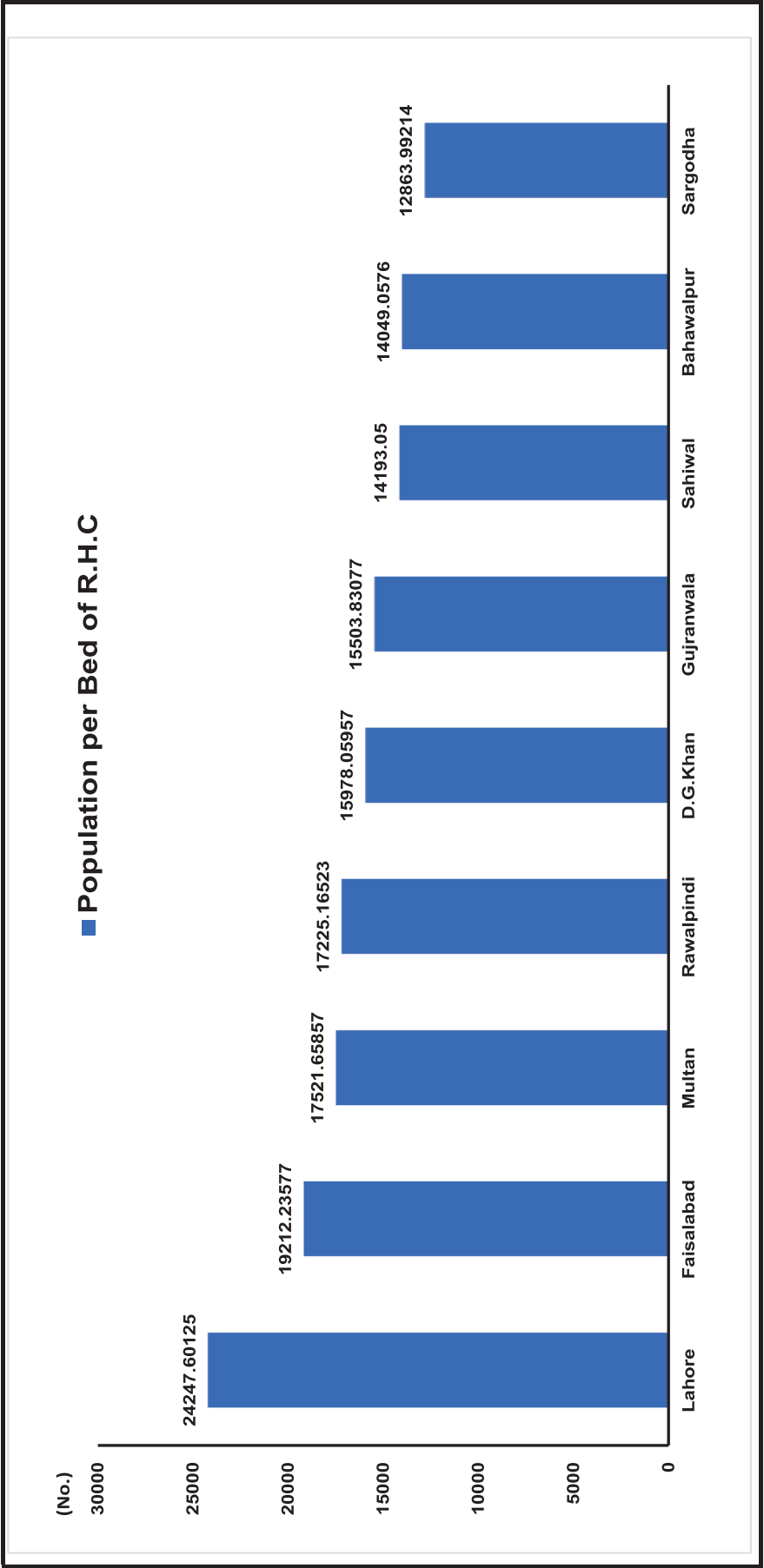
ii) D.G Health Service, Punjab

Figure 14: Population Per R.H.C by Division, The Punjab: As on 01-01-2023



Source:- i) Population Census Wing, Pakistan Bureau of Statistics, Government of Pakistan, Islamabad .
ii) D.G Health Service, Punjab

Figure 15: Population Per Beds of R.H.C by Division, The Punjab: As on 01-01-2023



Source:- i) Population Census Wing, Pakistan Bureau of Statistics, Government of Pakistan, Islamabad .
ii) D.G Health Service, Punjab

Table 11:- B.H.U & Their Bed Strength by Division, District, Tehsil, and Population, The Punjab: As on 01-01-2023

(Number)

Division/ District/ Tehsil	No. of Units		Population (Census 2017)	Population Per	
	B.H.U	Beds		B.H.U	Beds
The Punjab	2533	4926	110264125	43531	22384
Bahawalpur Division	288	550	11464031	39806	20844
Bahawalnagar District	104	194	2981919	28672	15371
Bahawalnagar	27	40	815143	30190	20379
Chishtian	24	48	691221	28801	14400
Fort Abbas	14	28	423529	30252	15126
Haroonabad	21	42	525598	25028	12514
Minchinabad	18	36	526428	29246	14623
Bahawalpur District	77	150	3668106	47638	24454
Ahmadpur East	26	50	1078683	41488	21574
Bahawalpur City	6	10	681696	113616	68170
Bahawalpur Sadar	11	22	574950	52268	26134
Hasilpur	11	22	456006	41455	20728
Khairpur Tamewali	8	16	262628	32829	16414
Yazman	15	30	614143	40943	20471
R.Y.Khan District	107	206	4814006	44991	23369
Khanpur	23	44	983415	42757	22350
Liaquatpur	29	56	1035509	35707	18491
R. Y. Khan	31	60	1530330	49365	25506
Sadiqabad	24	46	1264752	52698	27495
D.G.Khan Division	199	374	11264532	56606	30119
D.G.Khan District	55	106	3084631	56084	29100
D. G. Khan	15	28	1439042	95936	51394
D.G. Khan (Tribal Area)	8	16	212430	26554	13277
Kot Chutta	15	30	757403	50494	25247
Taunsa Sharif	17	32	675756	39750	21117
Layyah District	36	72	1824230	50673	25337
Choubara	6	12	252200	42033	21017
Karor	16	32	594639	37165	18582
Layyah	14	28	977391	69814	34907
Muzaffargarh District	76	132	4325483	56914	32769
Alipur	14	26	639748	45696	24606
Jatoi	13	26	714576	54967	27484
Kotaddu	22	30	1346687	61213	44890
Muzaffargarh	27	50	1624472	60166	32489
Rajanpur District	32	64	2030188	63443	31722
Jampur	13	26	849086	65314	32657
Rajanpur	12	24	775328	64611	32305
Rojhan	7	14	405774	57968	28984

Source:- i) Population Census Wing, Pakistan Bureau of Statistics, Government of Pakistan, Islamabad .

ii) D.G Health Service, Punjab

Table 11:- B.H.U & Their Bed Strength by Division, District, Tehsil, and Population, The Punjab: As on 01-01-2023 -Contd.

(Number)

Division/ District/ Tehsil	No. of Units		Population (Census 2017)	Population Per	
	B.H.U	Beds		B.H.U	Beds
Faisalabad Division	346	666	14178630	40979	21289
Chiniot District	38	72	1369740	36046	19024
Bhowana	17	32	374270	22016	11696
Chiniot	10	18	556147	55615	30897
Lalian	11	22	439323	39938	19969
Faisalabad District	173	336	7874790	45519	23437
Chak Jhumra	14	28	332461	23747	11874
Faisalabad City	6	6	3238841	539807	539807
Faisalabad Sadar	49	98	1465411	29906	14953
Jaranwala	50	100	1492276	29846	14923
Sammundri	30	58	643068	21436	11087
Tandlianwala	24	46	702733	29281	15277
Jhang District	61	118	2744085	44985	23255
Ahmadpur Sial	7	14	433517	61931	30966
Jhang	9	18	1466141	162905	81452
Shorkot	31	60	548626	17698	9144
18 hazari	14	26	295801	21129	11377
T. T. Singh District	74	140	2190015	29595	15643
Gojra	25	48	656007	26240	13667
Kamalia	9	16	371851	41317	23241
Pir Mahal	13	24	422331	32487	17597
T.T. Singh	27	52	739826	27401	14227
Gujranwala Division	421	820	16123984	38299	19663
Gujranwala District	99	188	5014196	50648	26671
Gujranwala	29	54	3066610	105745	56789
Kamoke	19	36	581444	30602	16151
Noshehra Virkan	24	46	535746	22323	11647
Wazirabad	27	52	830396	30755	15969
Gujrat District	93	182	2756110	29636	15143
Gujrat	49	94	1497865	30569	15935
Kharian	36	72	1010912	28081	14040
Sarai Alamgir	8	16	247333	30917	15458
Hafizabad District	33	64	1156957	35059	18077
Hafizabad	18	34	663735	36874	19522
Pindi Bhattian	15	30	493222	32881	16441
M. B. Din District	49	96	1593292	32516	16597
Malakwal	13	26	371869	28605	14303
Mandi Bahauddin	19	36	668007	35158	18556
Phalia	17	34	553416	32554	16277

Source:- i) Population Census Wing, Pakistan Bureau of Statistics, Government of Pakistan, Islamabad .
ii) D.G Health Service, Punjab

**Table 11:- B.H.U & Their Bed Strength by Division, District, Tehsil, and Population,
The Punjab: As on 01-01-2023 - Contd.**

(Number)

Division/ District/ Tehsil	No. of Units		Population (Census 2017)	Population Per	
	B.H.U	Beds		B.H.U	Beds
Narowal District	57	114	1709757	29996	14998
Narowal	18	36	596565	33143	16571
Shakargarh	25	50	674223	26969	13484
Zafarwal	14	28	438969	31355	15677
Sialkot District	90	176	3893672	43263	22123
Daska	23	44	846933	36823	19248
Pasrur	28	56	840881	30031	15016
Sambrial	11	22	411200	37382	18691
Sialkot	28	54	1794658	64095	33234
Lahore Division	223	432	19398081	86987	44903
Kasur District	83	162	3454996	41626	21327
Chunian	21	42	825684	39318	19659
Kasur	26	50	1334653	51333	26693
Kot Rahadha Kishan	14	26	360330	25738	13859
Pattoki	22	44	934329	42470	21235
Lahore District	7	14	11126285	1589469	794735
Lahore Cantt	-	-	1636342	-	-
Lahore City	4	8	3655774	913944	456972
Model Town	-	-	2698235	-	-
Raiwind	-	-	855626	-	-
Shalamar	3	6	2280308	760103	380051
Nankana Sahib District	49	94	1356374	27681	14430
Nankana	31	60	883876	28512	14731
Sangla Hill	10	20	227630	22763	11382
Shahkot	8	14	244868	30609	17491
Sheikhupura District	84	162	3460426	41196	21361
Ferozewala	13	24	795498	61192	33146
Muridke	19	38	639784	33673	16836
Safdarabad	14	28	272500	19464	9732
Sharaqpur	6	12	197220	32870	16435
Sheikhupura	32	60	1555424	48607	25924
Multan Division	288	570	12265161	42587	21518
Khanewal District	81	162	2921986	36074	18037
Jahanian	11	22	343361	31215	15607
Kabirwala	30	60	959861	31995	15998
Khanewal	20	40	856793	42840	21420
Mian Channu	20	40	761971	38099	19049

Source:- i) Population Census Wing, Pakistan Bureau of Statistics, Government of Pakistan, Islamabad .
ii) D.G Health Service, Punjab

**Table 11:- B.H.U & Their Bed Strength by Division, District, Tehsil, and Population,
The Punjab: As on 01-01-2023 - Contd.**

(Number)

Division/ District/ Tehsil	No. of Units		Population (Census 2017)	Population Per	
	B.H.U	Beds		B.H.U	Beds
Lodhran District	48	96	1700620	35430	17715
Dunyapur	14	28	495013	35358	17679
Karor Pacca	16	32	500939	31309	15654
Lodhran	18	36	704668	39148	19574
Multan District	84	164	4745109	56489	28934
Jalalpur Pirwala	16	32	554152	34635	17317
Multan City	4	4	2258570	564643	564643
Multan Sadar	50	100	1322756	26455	13228
Shujabad	14	28	609631	43545	21773
Vehari District	75	148	2897446	38633	19577
Burewala	24	48	1015385	42308	21154
Mailsi	28	56	953895	34068	17034
Vehari	23	44	928166	40355	21095
Rawalpindi Division	280	546	10007821	35742	18329
Attock District	62	124	1883556	30380	15190
Attock	8	16	434705	54338	27169
Fatehjang	12	24	325970	27164	13582
Hassanabdal	7	14	216566	30938	15469
Hazro	11	22	339238	30840	15420
Jand	14	28	295483	21106	10553
Pindigheb	10	20	271594	27159	13580
Chakwal District	63	126	1495982	23746	11873
Chakwal	25	50	656978	26279	13140
Choa Saidan Shah	8	16	141844	17731	8865
Kalar Kahar	6	12	169660	28277	14138
Lawa	-	-	125893	-	-
Talagang	24	48	401607	16734	8367
Jhelum District	48	96	1222650	25472	12736
Dina	10	20	238660	23866	11933
Jhelum	11	22	445190	40472	20236
PD Khan	14	28	336852	24061	12030
Sohawa	13	26	201948	15534	7767
Rawalpindi District	107	200	5405633	50520	27028
Gujar Khan	28	56	678503	24232	12116
Kahuta	10	20	220576	22058	11029
Kallar Syedan	9	18	217273	24141	12071
Kotli Sattian	9	18	119312	13257	6628
Murree	17	28	233471	13734	8338
Rawalpindi	28	48	3258547	116377	67886
Taxila	6	12	677951	112992	56496

Source:- i) Population Census Wing, Pakistan Bureau of Statistics, Government of Pakistan, Islamabad .
ii) D.G Health Service, Punjab

**Table 11:- B.H.U & Their Bed Strength by Division, District, Tehsil, and Population,
The Punjab: As on 01-01-2023- Contd.**

(Number)

Division/ District/ Tehsil	No. of Units		Population (Census 2017)	Population Per	
	B.H.U	Beds		B.H.U	Beds
Sahiwal Division	230	454	7380386	32089	16256
Okara District	97	192	3039139	31331	15829
Depalpur	48	96	1374912	28644	14322
Okara	31	60	1205655	38892	20094
Renala Khurd	18	36	458572	25476	12738
Pakpattan District	55	110	1823687	33158	16579
Arifwala	28	56	854462	30517	15258
Pakpattan	27	54	969225	35897	17949
Sahiwal District	78	152	2517560	32276	16563
Chichawatni	38	74	1026007	27000	13865
Sahiwal	40	78	1491553	37289	19122
Sargodha Division	258	514	8181499	31711	15917
Bhakkar District	40	80	1650518	41263	20631
Bhakkar	15	30	685059	45671	22835
Darya Khan	8	16	360807	45101	22550
Kalur Kot	10	20	347552	34755	17378
Mankera	7	14	257100	36729	18364
Khushab District	45	88	1281299	28473	14560
Khushab	16	32	689742	43109	21554
Nurpur	8	16	243295	30412	15206
Naushera	9	16	117942	13105	7371
Qaidabad	12	24	230320	19193	9597
Mianwali District	42	84	1546094	36812	18406
Isa Khel	10	20	375026	37503	18751
Mianwali	22	44	767130	34870	17435
Piplan	10	20	403938	40394	20197
Sargodha District	131	262	3703588	28272	14136
Bhalwal	15	30	357331	23822	11911
Bhera	9	18	315148	35016	17508
Kot Momin	18	36	453562	25198	12599
Sahiwal	13	26	341247	26250	13125
Sargodha	46	92	1537866	33432	16716
Shahpur	13	26	353969	27228	13614
Sillanwali	17	34	344465	20263	10131

Source:- i) Population Census Wing, Pakistan Bureau of Statistics, Government of Pakistan, Islamabad .

ii) D.G Health Service, Punjab

Figure 15: Population Per B.H.U by Division, The Punjab: As on 01-01-2023

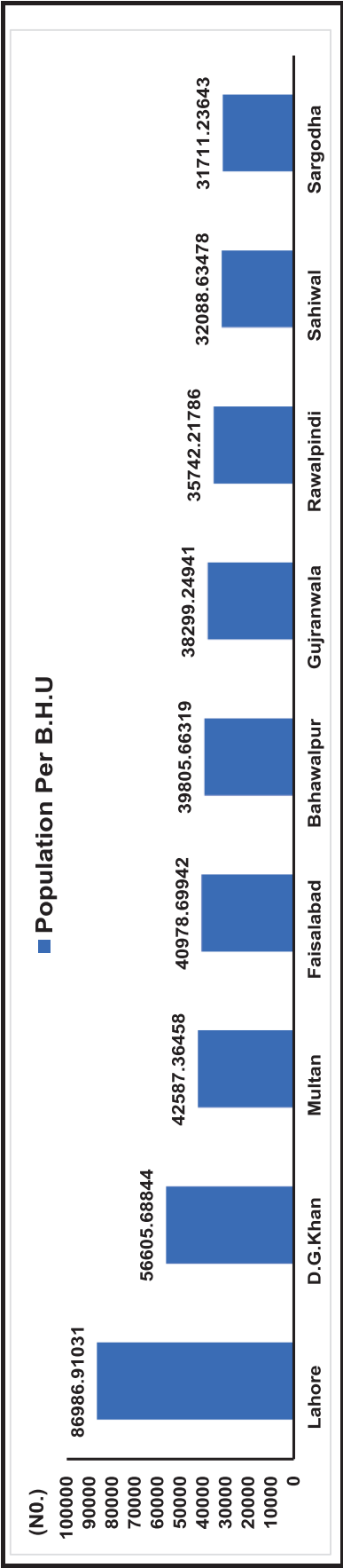
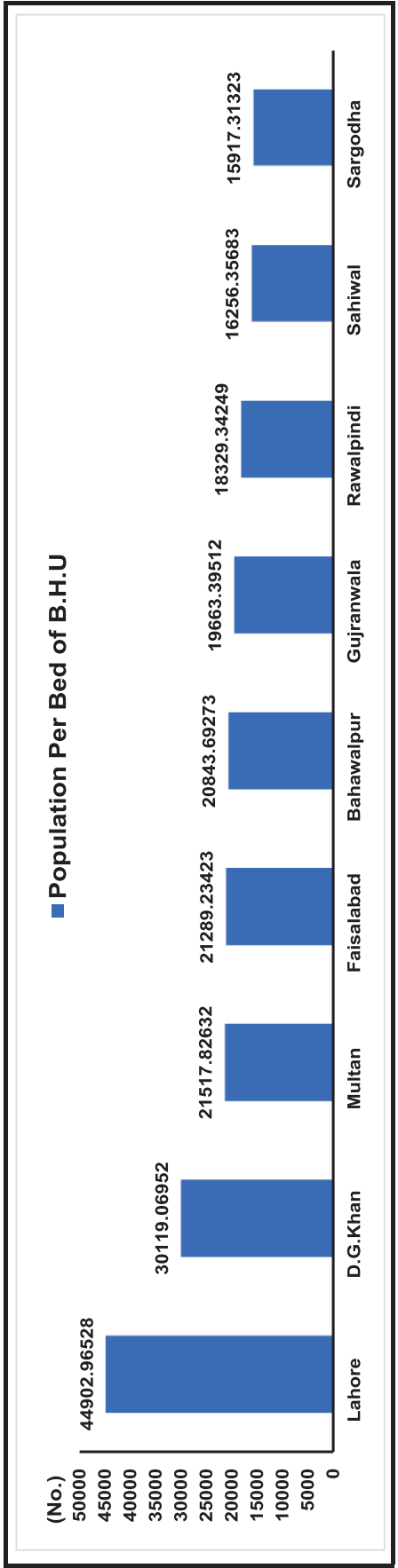


Figure 16 : Population Per Bed of B.H.U by Division, The Punjab: As on 01-01-2023



Source:- i) Population Census Wing, Pakistan Bureau of Statistics, Government of Pakistan, Islamabad .
ii) D.G Health Service, Punjab

Table 12:- Health Facilities by Division and District, The Punjab: As on 01-01-2023

(Number)

Division/ District	Hospitals		Population (Census 2017)	Population Per	
	No.	Beds		Hospitals	Beds
The Punjab	4,582	83,278	110,264,125	24,065	1,324
Bahawalpur Division	553	7,473	11,464,031	20,731	1,534
Bahawalnagar	179	1,481	2,981,919	16,659	2,013
Bahawalpur	171	3,411	3,668,106	21,451	1,075
R.Y.Khan	203	2,581	4,814,006	23,714	1,865
D.G.Khan Division	378	4,798	11,264,532	29,800	2,348
D.G.Khan	95	1,707	3,084,631	32,470	1,807
Layyah	91	910	1,824,230	20,046	2,005
Muzaffargarh	139	1,425	4,325,483	31,119	3,035
Rajanpur	53	756	2,030,188	38,305	2,685
Faisalabad Division	658	8,566	14,178,630	21,548	1,655
Chiniot	56	376	1,369,740	24,460	3,643
Faisalabad	323	5,321	7,874,790	24,380	1,480
Jhang	150	1,357	2,744,085	18,294	2,022
T. T. Singh	129	1,512	2,190,015	16,977	1,448
Gujranwala Division	722	8,097	16,123,984	22,332	1,991
Gujranwala	215	2,288	5,014,196	23,322	2,192
Gujrat	121	1,172	2,756,110	22,778	2,352
Hafizabad	62	667	1,156,957	18,661	1,735
M. B. Din	94	959	1,593,292	16,950	1,661
Narowal	77	959	1,709,757	22,205	1,783
Sialkot	153	2,052	3,893,672	25,449	1,898
Lahore Division	590	30,263	19,398,081	32,878	641
Kasur	138	1,450	3,454,996	25,036	2,383
Lahore	237	26,199	11,126,285	46,946	425
Nankana Sahib	86	600	1,356,374	15,772	2,261
Sheikhupura	129	2,014	3,460,426	26,825	1,718
Multan Division	473	7,410	12,265,161	25,931	1,655
Khanewal	106	1,498	2,921,986	27,566	1,951
Lodhran	72	656	1,700,620	23,620	2,592
Multan	161	4,039	4,745,109	29,473	1,175
Vehari	134	1,217	2,897,446	21,623	2,381
Rawalpindi Division	418	7,718	10,007,821	23,942	1,297
Attock	82	886	1,883,556	22,970	2,126
Chakwal	104	779	1,495,982	14,384	1,920
Jhelum	87	722	1,222,650	14,053	1,693
Rawalpindi	145	5,331	5,405,633	37,280	1,014
Sahiwal Division	363	3,467	7,380,386	20,332	2,129
Okara	146	1,283	2,517,560	17,244	1,962
Pakpattan	78	616	1,374,912	17,627	2,232
Sahiwal	139	1,568	1,823,687	13,120	1,163
Sargodha Division	427	5,486	8,181,499	19,160	1,491
Bhakkar	91	1,067	1,650,518	18,138	1,547
Khushab	96	711	1,281,299	13,347	1,802
Mianwali	74	1,347	1,546,094	20,893	1,148
Sargodha	166	2,361	3,703,588	22,311	1,569

Source:- i) Health Department, Government of the Punjab
 iii) Aqaf Department, Government of the Punjab
 v) Punjab Employee's Social Security Institutions
 vi) Punjab Health Care Commission

ii) Home Department (I.G. Prisons)
 iv) Pakistan Railways.
 vi) Director General Medical Services, WAPDA

Figure 18: Population Per Total Health Facilities by Division, The Punjab: As on 01-01-2023

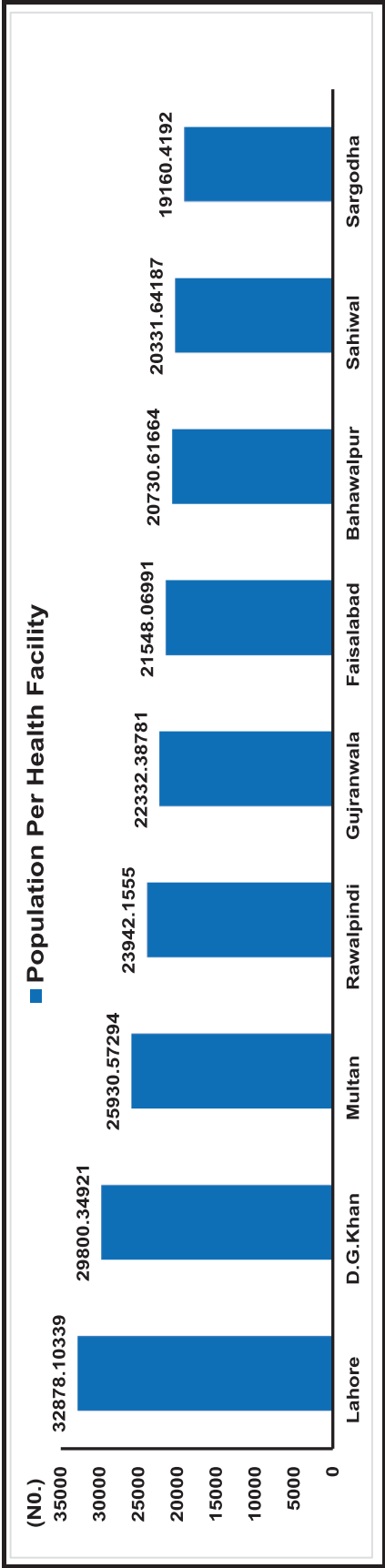
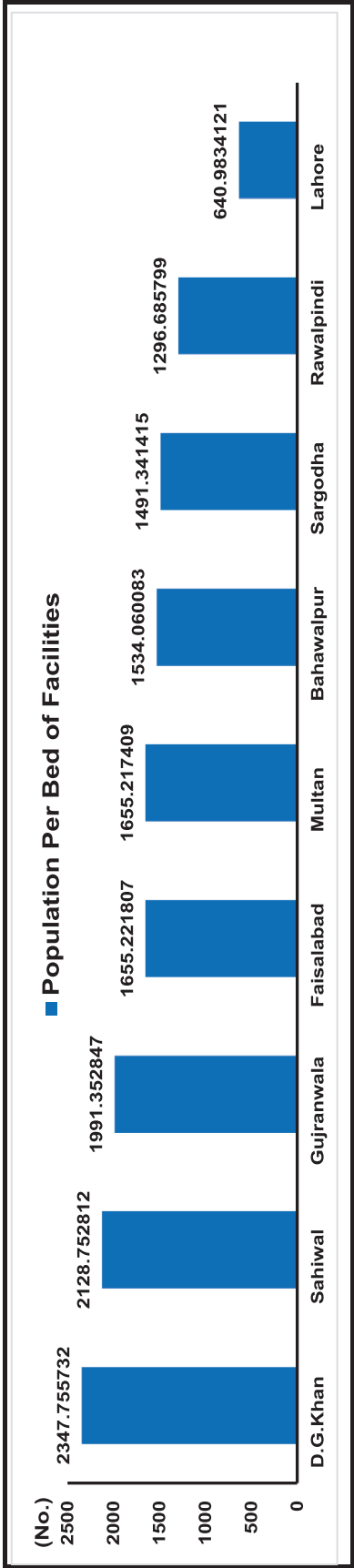


Figure 19: Population Per Bed of Total Facilities by Division, The Punjab: As on 01-01-2023



Source:- i) Population Census Wing, Pakistan Bureau of Statistics, Government of Pakistan, Islamabad .
ii) D.G Health Service, Punjab

Table 13:- Patients Treated (Indoor & Outdoor) in Government Hospitals by Division, District, and Tehsil, The Punjab: As on 01-01-2023

(Thousand Number)

Division/ District/ Tehsil	Government Hospitals	
	Indoor Patients	Outdoor Patients
The Punjab	7369	64257
Bahawalpur Division	946	8960
Bahawalnagar District	133	1604
Bahawalnagar	57	693
Chishtian	22	337
Fort Abbas	17	169
Haroonabad	11	255
Minchinabad	26	150
Bahawalpur District	450	3721
Ahmadpur East	20	523
Bahawalpur City	353	2139
Bahawalpur Saddar	0	0
Hasilpur	40	600
Khairpur Tamewali	15	188
Yazman	22	271
R.Y.Khan District	363	3635
Khanpur	31	612
Liaquatpur	29	319
Rahim Yar Khan	262	2067
Sadiqabad	41	637
D.G.Khan Division	2563	6296
D.G.Khan District	203	1735
D. G. Khan	159	996
D.G. Khan (Tribal Area)	2	34
Kot Chattha	16	417
Taunsa	26	288
Layyah District	1959	225
Chaubara	75	7
Karor	477	36
Layyah	1407	182
Muzaffargarh District	295	3524
Alipur	23	449
Jatoi	64	54
Kot Addu	109	707
Muzaffargarh	99	2314
Rajanpur District	106	812
Jampur	22	328
Rajanpur	48	183
Rojhan	36	301

Source:- i) Health Department, Government of the Punjab ii) Home Department (I.G. Prisons)
 iii) Auqaf Department, Government of the Punjab iv) Pakistan Railways.
 v) Punjab Employee's Social Security Institutions vi) Director General Medical Services, WAPDA

Table 13:- Patients Treated (Indoor & Outdoor) in Government Hospitals by Division, District, and Tehsil, The Punjab: As on 01-01-2023 - Contd.

(Thousand Number)

Division/ District/ Tehsil	Government Hospitals	
	Indoor Patients	Outdoor Patients
Faisalabad Division	675	8892
Chiniot District	81	593
Bhawana	7	133
Chiniot	48	258
Lalian	26	202
Faisalabad District	175	6111
Chak Jhumra	22	289
Faisalabad City	75	4234
Faisalabad Sadar	0	0
Jaranwala	19	720
Samundri	31	530
Tandlianwala	28	338
Jhang District	134	777
Ahmadpur Sial	27	212
Jhang	21	117
Shorkot	74	218
18-Hazari	12	230
T. T. Singh District	285	1411
Gojra	47	477
Kamalia	25	225
Pirmahal	7	174
T.T. Singh	206	535
Gujranwala Division	706	9560
Gujranwala District	358	3794
Gujranwala City	302	2156
Kamoke	9	562
Noshehra Virkan	7	262
Wazirabad	40	814
Gujrat District	64	1615
Gujrat	19	538
Kharian	38	891
Sarai Alamgir	7	186
Hafizabad District	31	467
Hafizabad	26	190
Pindi Bhattian	5	277
M. B. Din District	46	384
Malakwal	6	133
Mandi Bahauddin	34	138
Phalia	6	113

Source:- i) Health Department, Government of the Punjab ii) Home Department (I.G. Prisons)
 iii) Aqaf Department, Government of the Punjab iv) Pakistan Railways.
 v) Punjab Employee's Social Security Institutions vi) Director General Medical Services, WAPDA

Table 13:- Patients Treated (Indoor & Outdoor) in Government Hospitals by Division, District, and Tehsil, The Punjab: As on 01-01-2023 - Contd.

(Thousand Number)

Division/ District/ Tehsil	Government Hospitals	
	Indoor Patients	Outdoor Patients
Narowal District	109	1223
Narowal	95	886
Shakargarh	14	337
Zafarwal	0	0
Sialkot District	98	2077
Daska	31	537
Pasrur	28	485
Sambrial	16	402
Sialkot	23	653
Lahore Division	515	8588
Kasur District	80	2034
Chunian	7	272
Kasur	46	1317
Kot Radha Kishan	21	178
Pattoki	6	267
Lahore District	113	2726
Lahore Cantt	81	2259
Lahore City	2	13
Model Town	15	29
Raiwind	11	355
Shalimar	4	70
Nankana Sahib District	68	961
Nankana Sahib	32	437
Sangla Hill	22	228
Shah Kot	14	296
Sheikhupura District	254	2867
Ferozewala	43	515
Muridke	27	564
Safdarabad	30	284
Sharaqpur	11	251
Sheikhupura	143	1253
Multan Division	762	6024
Khanewal District	108	1254
Jahanian	16	276
Kabirwala	21	217
Khanewal	55	561
Mian Channu	16	200

Source:- i) Health Department, Government of the Punjab ii) Home Department (I.G. Prisons)
 iii) Auqaf Department, Government of the Punjab iv) Pakistan Railways.
 v) Punjab Employee's Social Security Institutions vi) Director General Medical Services, WAPDA

Table 13:- Patients Treated (Indoor & Outdoor) in Government Hospitals by Division, District, and Tehsil, The Punjab: As on 01-01-2023 - Contd.

(Thousand Number)

Division/ District/ Tehsil	Government Hospitals	
	Indoor Patients	Outdoor Patients
Lodhran District	58	1077
Dunyapur	19	192
Kahror Pacca	8	259
Lodhran	31	626
Multan District	326	2080
Jalalpur Pirwala	9	318
Multan City	307	1324
Multan Saddar	4	16
Shujabad	6	422
Vehari District	270	1613
Burewala	18	398
Mailsi	33	447
Vehari	219	768
Rawalpindi Division	744	8839
Attock District	219	1201
Attock	189	134
Fateh Jang	6	345
Hasan Abdal	4	291
Hazro	8	195
Jand	8	72
Pindi Gheb	4	164
Chakwal District	76	1533
Chakwal	30	801
Choa Saidan Shah	5	133
Kallar Kahar	2	172
Lawa	0	0
Talagang	39	427
Jhelum District	52	877
Dina	0	0
Jhelum	35	570
Pind Dadan Khan	9	126
Sohawa	8	181
Rawalpindi District	397	5228
Gujar Khan	17	442
Kahuta	7	350
Kallar Syedan	13	221
Kotli Sattian	7	48
Murree	17	263
Rawalpindi	322	3357
Taxila	14	547

Source:- i) Health Department, Government of the Punjab ii) Home Department (I.G. Prisons)
 iii) Auqaf Department, Government of the Punjab iv) Pakistan Railways.
 v) Punjab Employee's Social Security Institutions vi) Director General Medical Services, WAPDA

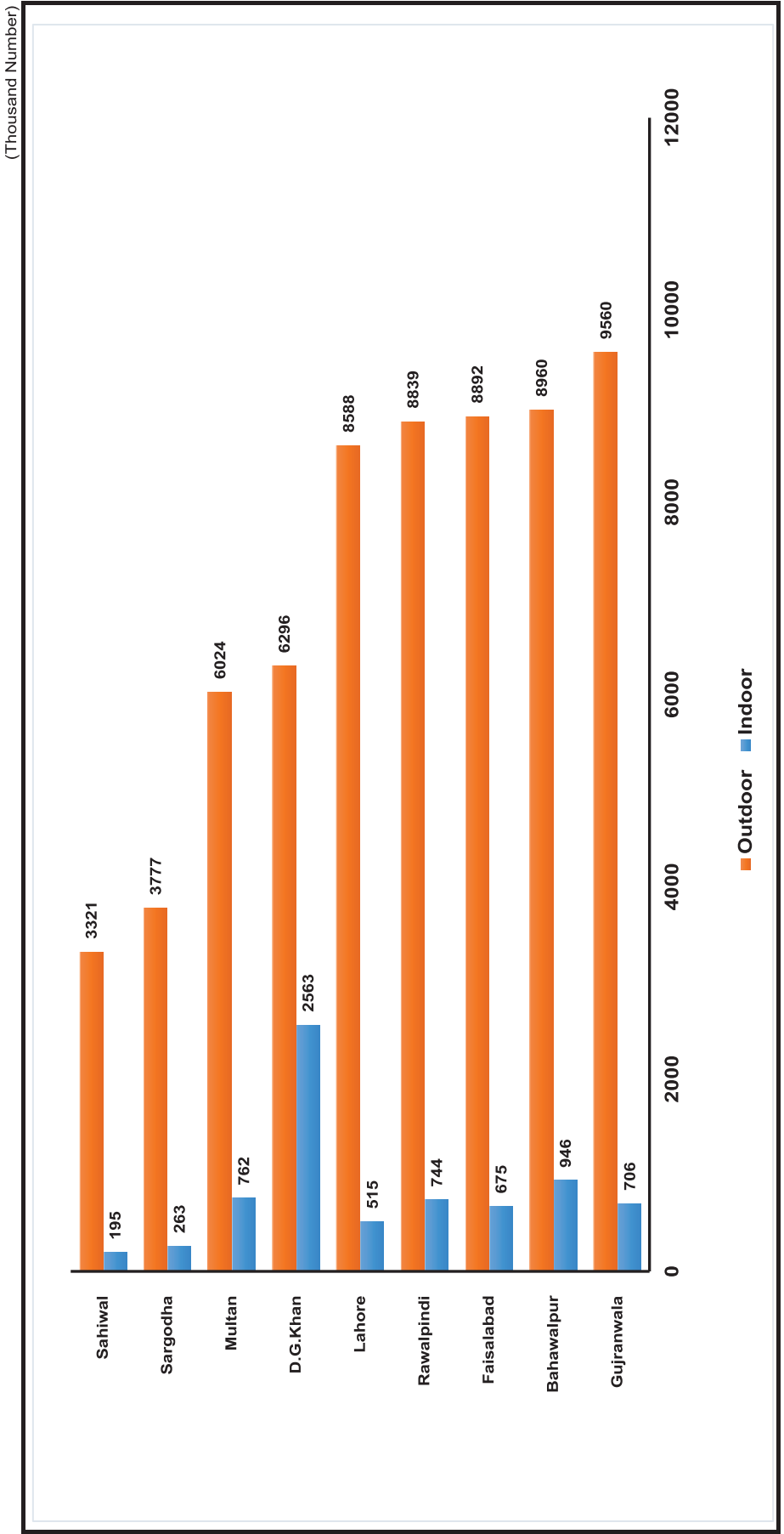
Table 13:- Patients Treated (Indoor & Outdoor) in Government Hospitals by Division, District, and Tehsil, The Punjab: As on 01-01-2023 - Contd

(Thousand Number)

Division/ District/ Tehsil	Government Hospitals	
	Indoor Patients	Outdoor Patients
Sahiwal Division	195	3321
Okara District	117	1651
Depal Pur	26	557
Okara	86	946
Renala Khurd	5	148
Pakpattan District	29	1024
Arifwala	8	456
Pakpattan	21	568
Sahiwal District	49	646
Chichawatni	48	405
Sahiwal	1	241
Sargodha Division	263	3777
Bhakkar District	82	1241
Bhakkar	57	722
Darya Khan	17	186
Kalur Kot	6	184
Mankera	2	149
Khushab District	62	424
Khushab	27	168
Nurpur Thal	8	100
Naushera	20	100
Quaidabad	7	56
Mianwali District	89	1227
Isa Khel	28	479
Mianwali	41	545
Piplan	20	203
Sargodha District	30	885
Bhalwal	5	143
Bhera	3	68
Kot Momin	1	38
Sahiwal	4	80
Sargodha	11	223
Shahpur	5	188
Sillanwali	1	145

Source:- i) Health Department, Government of the Punjab ii) Home Department (I.G. Prisons)
 iii) Auqaf Department, Government of the Punjab iv) Pakistan Railways.
 v) Punjab Employee's Social Security Institutions vi) Director General Medical Services, WAPDA

**Figure 20: Indoor & Outdoor Patients Treated in Government Hospitals by Division, The Punjab:
As on 01-01-2023**



Source:- i) Health Department, Government of the Punjab
ii) Auqaf Department, Government of the Punjab
iii) Punjab Employee's Social Security Institutions

ii) Home Department (I.G. Prisons)
iv) Pakistan Railways.
vi) Director General Medical Services, WAPDA

**Table 14:- Patients Treated in Government Hospitals by Division, District, and Tehsil,
The Punjab: As on 01-01-2023**

(Thousand Number)

Division/ District/ Tehsil	Patients Treated in Government Hospital
The Punjab	71,626
Bahawalpur Division	9,906
Bahawalnagar District	1,737
Bahawalnagar	750
Chishtian	359
Fort Abbas	186
Haroonabad	266
Minchinabad	176
Bahawalpur District	4,171
Ahmadpur East	543
Bahawalpur City	2,492
Bahawalpur Saddar	0
Hasilpur	640
Khairpur Tamewali	203
Yazman	293
R.Y.Khan District	3,998
Khanpur	643
Liaquatpur	348
Rahim Yar Khan	2,329
Sadiqabad	678
D.G.Khan Division	8,859
D.G.Khan District	1,938
D. G. Khan	1,155
D.G. Khan (Tribal Area)	36
Kot Chatta	433
Taunsa	314
Layyah District	2,184
Chaubara	82
Karor	513
Layyah	1,589
Muzaffargarh District	3,819
Alipur	472
Jatoi	118
Kot Addu	816
Muzaffargarh	2,413
Rajanpur District	918
Jampur	350
Rajanpur	231
Rojhan	337

Source:- i) Health Department, Government of the Punjab ii) Home Department (I.G. Prisons)
 iii) Aqaf Department, Government of the Punjab iv) Pakistan Railways.
 v) Punjab Employee's Social Security Institutions vi) Director General Medical Services, WAPDA

**Table 14:- Patients Treated in Government Hospitals by Division, District, and Tehsil,
The Punjab: As on 01-01-2023 - Contd.**

(Thousand Number)

Division/ District/ Tehsil	Patients Treated in Government Hospital
Faisalabad Division	9,567
Chiniot District	674
Bhawana	140
Chiniot	306
Lalian	228
Faisalabad District	6,286
Chak Jhumra	311
Faisalabad City	4,309
Faisalabad Sadar	0
Jaranwala	739
Samundri	561
Tandlianwala	366
Jhang District	911
Ahmadpur Sial	239
Jhang	138
Shorkot	292
18-Hazari	242
T. T. Singh District	1,696
Gojra	524
Kamalia	250
Pirmahal	181
T.T. Singh	741
Gujranwala Division	10,266
Gujranwala District	4,152
Gujranwala City	2,458
Kamoke	571
Noshehra Virkan	269
Wazirabad	854
Gujrat District	1,679
Gujrat	557
Kharian	929
Sarai Alamgir	193
Hafizabad District	498
Hafizabad	216
Pindi Bhattian	282
Mandi Bahauddin District	430
Malakwal	139
Mandi Bahauddin	172
Phalia	119

Source:- i) Health Department, Government of the Punjab ii) Home Department (I.G. Prisons)

iii) Auqaf Department, Government of the Punjab iv) Pakistan Railways.

v) Punjab Employee's Social Security Institutions vi) Director General Medical Services, WAPDA

**Table 14:- Patients Treated in Government Hospitals by Division, District, and Tehsil,
The Punjab: As on 01-01-2023 - Contd.**

(Thousand Number)

Division/ District/ Tehsil	Patients Treated in Government Hospital
Narowal District	1,332
Narowal	981
Shakargarh	351
Zafarwal	0
Sialkot District	2,175
Daska	568
Pasrur	513
Sambrial	418
Sialkot	676
Lahore Division	9,103
Kasur District	2,114
Chunian	279
Kasur	1,363
Kot Radha Kishan	199
Pattoki	273
Lahore District	2,839
Lahore Cantt	2,340
Lahore City	15
Model Town	44
Raiwind	366
Shalimar	74
Nankana Sahib District	1,029
Nankana Sahib	469
Sangla Hill	250
Shah Kot	310
Sheikhupura District	3,121
Ferozewala	558
Muridke	591
Safdarabad	314
Sharaqpur	262
Sheikhupura	1,396
Multan Division	6,786
Khanewal District	1,362
Jahanian	292
Kabirwala	238
Khanewal	616
Mian Channu	216

Source:- i) Health Department, Government of the Punjab ii) Home Department (I.G. Prisons)
 iii) Auqaf Department, Government of the Punjab iv) Pakistan Railways.
 v) Punjab Employee's Social Security Institutions vi) Director General Medical Services, WAPDA

**Table 14:- Patients Treated in Government Hospitals by Division, District, and Tehsil,
The Punjab: As on 01-01-2023 - Contd.**

(Thousand Number)

Division/ District/ Tehsil	Patients Treated in Government Hospital
Lodhran District	1,135
Dunyapur	211
Kahrora Pacca	267
Lodhran	657
Multan District	2,406
Jalalpur Pirwala	327
Multan City	1,631
Multan Saddar	20
Shujabad	428
Vehari District	1,883
Burewala	416
Mailsi	480
Vehari	987
Rawalpindi Division	9,583
Attock District	1,420
Attock	323
Fateh Jang	351
Hasan Abdal	295
Hazro	203
Jand	80
Pindi Gheb	168
Chakwal District	1,609
Chakwal	831
Choa Saidan Shah	138
Kallar Kahar	174
Lawa	0
Talagang	466
Jhelum District	929
Dina	0
Jhelum	605
Pind Dadan Khan	135
Sohawa	189
Rawalpindi District	5,625
Gujar Khan	459
Kahuta	357
Kallar Syedan	234
Kotli Sattian	55
Murree	280
Rawalpindi	3,679
Taxila	561

Source:- i) Health Department, Government of the Punjab ii) Home Department (I.G. Prisons)

iii) Aqaf Department, Government of the Punjab iv) Pakistan Railways.

v) Punjab Employee's Social Security Institutions vi) Director General Medical Services, WAPDA

**Table 14:- Patients Treated in Government Hospitals by Division, District, and Tehsil,
The Punjab: As on 01-01-2023 - Contd.**

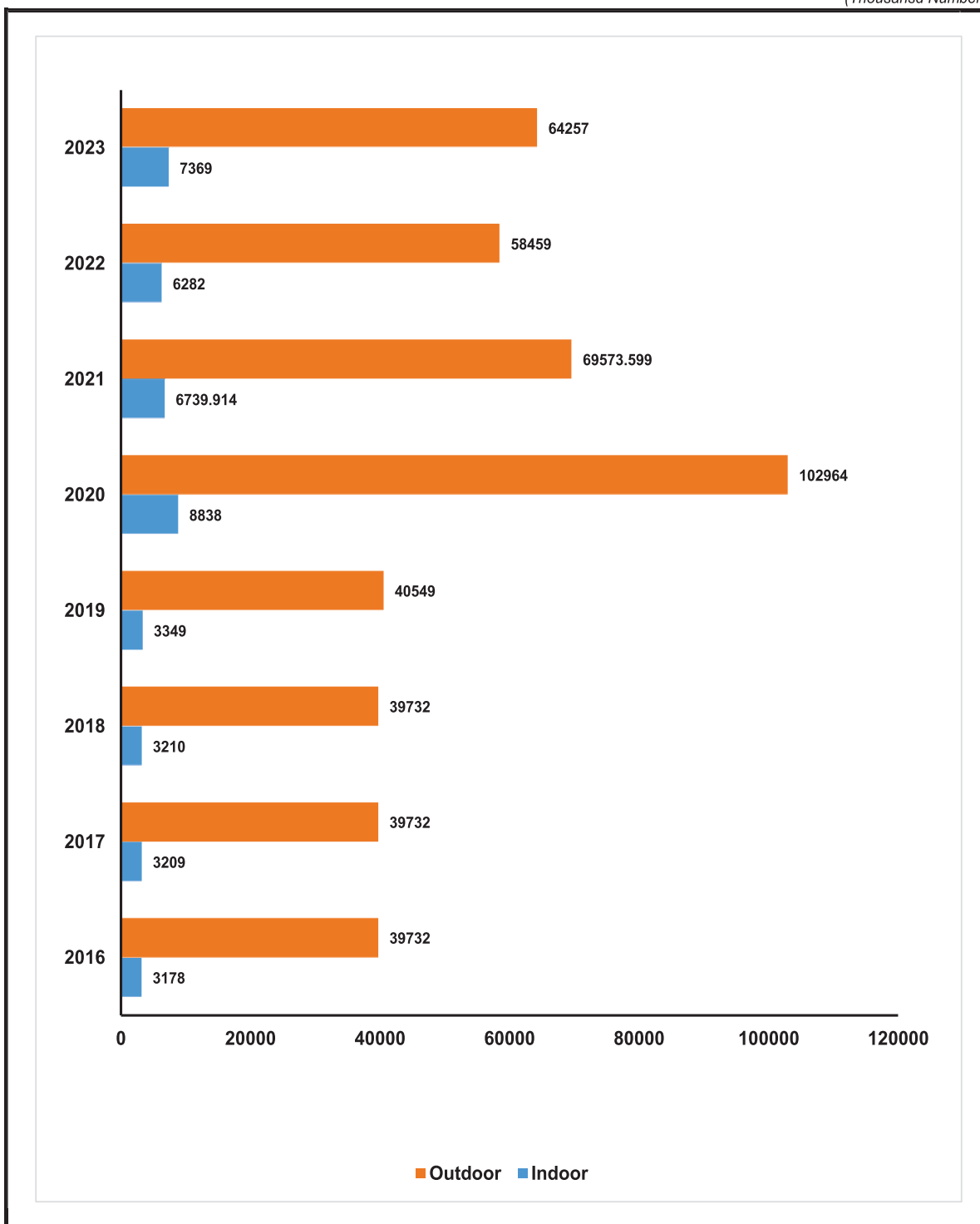
(Thousand Number)

Division/ District/ Tehsil	Patients Treated in Government Hospital
Sahiwal Division	3,516
Okara District	1,768
Depal Pur	583
Okara	1,032
Renala Khurd	153
Pakpattan District	1,053
Arifwala	464
Pakpattan	589
Sahiwal District	695
Chichawatni	453
Sahiwal	242
Sargodha Division	4,040
Bhakkar District	1,323
Bhakkar	779
Darya Khan	203
Kalur Kot	190
Mankera	151
Khushab District	486
Khushab	195
Nurpur Thal	108
Naushera	120
Quaidabad	63
Mianwali District	1,316
Isa Khel	507
Mianwali	586
Piplan	223
Sargodha District	915
Bhalwal	148
Bhera	71
Kot Momin	39
Sahiwal	84
Sargodha	234
Shahpur	193
Sillanwali	146

Source:- i) Health Department, Government of the Punjab ii) Home Department (I.G. Prisons)
 iii) Aqaf Department, Government of the Punjab iv) Pakistan Railways.
 v) Punjab Employee's Social Security Institutions vi) Director General Medical Services, WAPDA

Figure 21: Indoor & Outdoor Patients Treated in Government Hospitals, The Punjab: (2019 - 2023)

(Thousands Number)



Source:- i) Health Department, Government of the Punjab
 iii) Auqaf Department, Government of the Punjab
 v) Punjab Employee's Social Security Institutions

ii) Home Department (I.G. Prisons)
 iv) Pakistan Railways.
 vi) Director General Medical Services, WAPDA

**Telephone Directory of Bureau of Statistics, Headquarters'
Office, Lahore, Punjab**

Name Of Officer/ Designation	Telephone Number
Ch. Sajid Rasul Director General	+92 (42) 99232902
Mr. Shamas ul Huda Director	+92 (42) 99232905
Mr. Asif Yousaf Assistant Director to Director General	+92 (42) 99232917 (Ext. 1219)
Mr. Mazhar Hussain P.A to Director General	+92 (42) 99232902 Fax: (42) 99232903
Mr. Muhammad Farooq (Assistant Director) Chief Public Information Officer	+92 (42) 99232917 (Ext. 1327)

Divisions & Divisional In-Charge

Administration Division

Mr. Zahid Mahmood
(Deputy Director)
Telephone: +92 (42) 99232909
(Ext. 1216)

Audit /Reconciliation Courts

Ms. Humaira Qasim
(Assistant Director)
Telephone: +92 (42) 99232910

CIS/CMI Division

Ms. Saira Abid
(Deputy Director)
Telephone: +92 (42) 99232907
(Ext. 1113)

Data Processing Division

Mr. Rohail Amjad
(System Analyst/Programmer)
Telephone: +92 (42) 99232916
(Ext. 1431)

Price Division

Mr. Muhammad Zeeshan
(Assistant Director)
Telephone: +92 (42) 99232917
(Ext. 1326)

Rural Statistics Division

Mr. Allah Ditta
(Deputy Director)
Telephone: +92 (42) 99232920

Agriculture Division

Mr. Allah Ditta
(Deputy Director)
Telephone: +92 (42) 99232920

Budget & Account

Mr. Muhammad Irfan Siddique
(Statistical Officer)
Telephone: +92 (42) 99232911

Coordination Division

Mr. Muhammad Asif Yousaf
(Assistant Director)
Telephone: +92 (42) 99232917
(Ext. 1219)

Education & Health Division

Ms. Rukhsana Naik
(Deputy Director)
Telephone: +92 (42) 99232914
(Ext. 1305)

Publication Division

Mr. Muhammad Farooq
(Assistant Director)
Telephone: +92 (42) 99232917
(Ext. 1327)

SD&R Division

Mr. Isaac Shahzad
(Assistant Director)
Telephone: +92 (42) 99232917
(Ext. 1116)

Detail Directory of Bureau of Statistics Punjab (Field Offices), Punjab

Bahawalnagar

Mr. Muhammad Ijaz Aslam
(Assistant Director)
House # 62-near Fisheries Department,
Wukla Colony, Bahawalnagar.
Telephone: 063-9330002
Email: adbosbwn@gmail.com

Bhakkar

Mr. Abdul Qudoos Khan
(Statistical Officer)
Mohallah Mandi Town, House no.198 ,Block # 12
Near Pracha Filling Station Jhang Road, Bhakkar
Telephone: 0453-9200338
Email: ad.bos.bk@gmail.com

D.G Khan

Mr. Muhammad Kashif
(Deputy Director)
70-A Block, Kheyaban-e-Sarwar, Multan Road,
D.G.Khan.
Telephone: 064-9330108
Email: dd.dgkhan@bos.gop.pk

Gujranwala

Mr. Gulzar Ahmad
(Deputy Director)
2nd Floor, Azam Plaza, Near Pasport Office,
Bukhari Road, Gujranawala.
Telephone: 055-9200419
Email: ddbosgrw@yahoo.com , dd.gwa@bos.gop.pk

Layyah

Mr. Saqlain Shah
(Statistical Officer)
House # 190, Employees Colony,
Layyah.
Telephone: 0606-920273
Email: ad.ly@bos.gop.pk

Rawalpindi

Mr. Muhammad Saeed Shakir
(Deputy Director)
ABAD Complex Muree Road
Rawalpindi.
Telephone: 051-9292035
Email: bosrwp@gmail.com

Sargodha

Mr. Muhammad Azhar
(Assistant Director)
House # 52-Umer Park, Near 47 Adda,
Sargodha.
Telephone: 048-3765387
Email: bossgd@hotmail.com

Sialkot

Mr. Muhammad Arif Aziz
(Assistant Director)
Gallah Hunter Pura Opposite Larri Adda
Christian Town , Sialkot.
Telephone: 052-4291219
Email: adbosskt@gmail.com, ad.slk@bos.gop.pk

Bahawalpur

Mr. Muhammad Tanvir
(Deputy Director)
Tosha Khana, Near Cholistan Development Authority
Bahawalpur.
Telephone: 062-9250193
Email: bosbwp1@gmail.com

Chakwal

Mr. Liaqat Ali
(Statistical Officer)
Street # 4, 2nd Floor Mohallaha Shumali/Chah
Loharan Behkari Road, Chakwal
Telephone: 0543-554086
Email: bos.chakwal@gmail.com

Faisalabad

Mr. Mubarik Ali
(Deputy Director)
P-45, Main Road Al-Fayaz Colony, Satiana Road, Faisalabad.
Telephone: 041-9330531
041-9330532
Email: bosfsd@gmail.com

Kasur

Mr. Adeel Zaman
(Statistical Officer)
House # 508/B, Gulberg Conony, near Jamia Masjid, Field Office,
Kasur
Telephone: 049-2723615
Email: ad.ksr@bos.gop.pk

Multan

Mr. Husnain Haider
(Deputy Director)
Near Circuit House/District Jail
Multan.
Telephone: 061-9200930
Email: dd.mn@bos.gop.pk

Sahiwal

Mr. Muhammad Ameen
(Assistant Director)
House # 34-H Block, Shadman Town
Sahiwal
Telephone: 040-9330077
Email: bossahiwal@gmail.com

Sheikhupura

Mr. Shahid Ahmad
(Statistical Officer)
Mohallah Nabi Pura, Opposite Govt. Vocational
College, Hiran Minar Road, Sheikhupura.
Telephone: 056-3791770
Email: ad.bos.skp@gmail.com



Bureau of Statistics
65-Trade Centre Block,
MA Johar Town, Lahore
(042) 99232917-9
<http://www.bos.punjab.gov.pk>